

Awarding Bodies



UNIVERSITY  
OF LONDON

Australian Partner



# Royal Institute of Colombo **PROGRAMME GUIDE**

**Law | Economics | Data Science |  
Finance | Psychology |  
Engineering | Science |  
IT | Education |  
and more |**

**2024 - 2025**

(+94) 77 235 5000 | [info@ric.lk](mailto:info@ric.lk) | [www.ric.lk](http://www.ric.lk)





# Table of Contents

<b>Welcome Messages</b> .....	<b>02</b>
<b>Welcome to Royal Institute of Colombo</b> .....	<b>04</b>
<b>Our Journey</b> .....	<b>05</b>
<b>Notable Alumni</b> .....	<b>06</b>
<b>Awarding Bodies</b> .....	<b>07</b>
<b>Academic Direction</b> .....	<b>12</b>
<b>Degrees We Offer</b> .....	<b>13</b>
<b>Affiliated University Rankings</b> .....	<b>14</b>
<b>Why RIC</b> .....	<b>16</b>
<b>Our Facilities</b> .....	<b>18</b>
<b>Clubs and Societies</b> .....	<b>20</b>
<b>Student Learning Experience</b> .....	<b>22</b>
<b>Scholarship Schemes</b> .....	<b>24</b>
<b>Vibrant Student Life</b> .....	<b>26</b>
<b>International Foundation Programmes</b> .....	<b>28</b>
University of London Foundation Programme .....	<b>30</b>
RIC Foundation Programme for Deakin .....	<b>30</b>
<b>Undergraduate Degree Programmes</b> .....	<b>32</b>
Laws Programmes .....	<b>34</b>
Economics, Management, Finance and Social Sciences Programmes (EMFSS) .....	<b>38</b>
LSE Summer School .....	<b>51</b>
Psychology Programme .....	<b>52</b>
Science Pathway Programmes .....	<b>56</b>
Engineering Pathway Programmes .....	<b>62</b>
Information Technology Pathway Programmes .....	<b>68</b>
Learn from World-Class Deakin Experts .....	<b>72</b>
Ministry of Higher Education (MoHE) Approved and University Grants Commission (UGC) Accredited Programmes .....	<b>74</b>
<b>Postgraduate Degree Programmes</b> .....	<b>82</b>
Graduate Diploma in Commercial Law .....	<b>84</b>
Graduate Diploma in Business Analytics.....	<b>84</b>
Graduate Diploma in Data Science .....	<b>85</b>
Master of Laws (LLM) .....	<b>86</b>
<b>Our Industry Partners</b> .....	<b>88</b>
<b>Popular Graduate Destinations</b> .....	<b>89</b>
<b>Apply Now</b> .....	<b>90</b>

# Message from the Chairman



Congratulations on selecting Royal Institute of Colombo (RIC) for your higher education journey, which is affiliated with world-renowned universities. At RIC, we are committed to fostering educational excellence, empowering students to realise their fullest potential, and thrive in their chosen career paths.

Achieving educational excellence is not just a goal but it is a way of life. As you stand at an important juncture of your life, RIC empowers you with a multitude of higher education opportunities. Not only can you graduate from world-renowned universities, but you also have the privilege of receiving your bachelor's degree directly from Royal Institute of Colombo as well.

At RIC, we believe in experiential learning – learning by doing, as the cornerstone of developing essential soft skills crucial for success in professional pursuits. As an educator of the nation for over five decades, we take pride in the holistic development and skill enhancement of our students throughout their academic journey. It is rewarding to see how our students cultivate discipline and form favourable habits and skills that have transformed their lives while fulfilling the demands of the global landscape.

RIC delivers unparalleled higher education of exceptional calibre, focusing on enrichment in all aspects of personal, academic and professional development. Our alumni have been accepted by World-class universities to engage in their higher education as well as secure successful employment in notable professions the world over. In Sri Lanka, the graduates who followed the BSc and Law degrees for the last three decades are holding top positions in multinational corporations, leading law firms, business enterprises, government agencies and have become successful sole practitioners in the legal field.

We look forward to supporting you on your journey to success.

Wishing you all the best!

**Mr. G. T. Bandara**

Chairman  
Royal Institute of Colombo

# Message from the Academic Director



As you leaf through these pages, you're not just browsing a prospectus, but glimpsing into a world of boundless opportunities for your academic growth, personal development, and professional success. Royal Institute of Colombo (RIC) prides itself in offering a diverse array of degree programmes from prestigious highly ranked universities in the world in the fields of Psychology, Data Science, Business Analytics, Software Engineering, Forensic Science, Law, World Economy, Finance, Education, International Relations to name a few. These degree programmes are meticulously crafted to meet the demands of a rapidly evolving global landscape.

Our commitment to academic rigour is matched only by our dedication to fostering a supportive and inclusive learning environment where we welcome competent students from all backgrounds. At RIC, you'll find passionate faculty members who are not just experts in their fields, but also mentors committed to guiding you towards success. Our state-of-the-art facilities provide the ideal backdrop for exploration and discovery, offering you the tools and resources you need to excel in your studies.

Education at RIC is about more than just earning a degree. It's about the cultivation of lifelong skills – leadership skills, problem-solving skills, transferable skills, communication skills, critical thinking skills, etc. – that will serve you better in personal and professional pursuits. Whether you dream of launching your own startup, conducting groundbreaking research, or making a difference in your community, education at RIC will provide you the pathway.

We invite you to join RIC on a transformative journey towards a brighter future.

Congratulations and wishing you all the best!

## **Dr. Nirodha Bandara**

Academic Director  
Royal Institute of Colombo

# Welcome to Royal Institute of Colombo



At Royal Institute of Colombo, collaboration, transformation, and innovation are at the core of everything we do. We foster a culture of sharing ideas, flexibility, and forward thinking, ensuring that our teaching and research are always cutting-edge. With strong links to various industries, we are committed to providing real benefits to our students. The transformation we seek aims not only to change the minds and lives of our students but also to transform the world around us. Innovation is at the heart of everything we do, from pioneering teaching methods to groundbreaking research projects.

Our affiliations with prestigious universities like the University of London (UK) and Deakin University, Australia, as well as with the University Grants Commission (UGC), and the Ministry of Higher Education (MoHE) in Sri Lanka, demonstrate our commitment to providing high-quality education recognised locally and globally. These partnerships offer access

to top-notch academic resources, faculty, and opportunities for local and international collaborations. They also enhance the quality of education we provide, ensuring our students are well-prepared for success in a rapidly changing global landscape.

Get ready to embark on a transformative journey with RIC, where your opportunity to make a positive impact in the world starts now!



## Top ranked Universities

We have affiliations with top-ranked universities in the world, ensuring quality education



## Learn from global experts

Top-ranked faculty and co-teaching elevate your learning journey at RIC



## 90%+ graduate employment

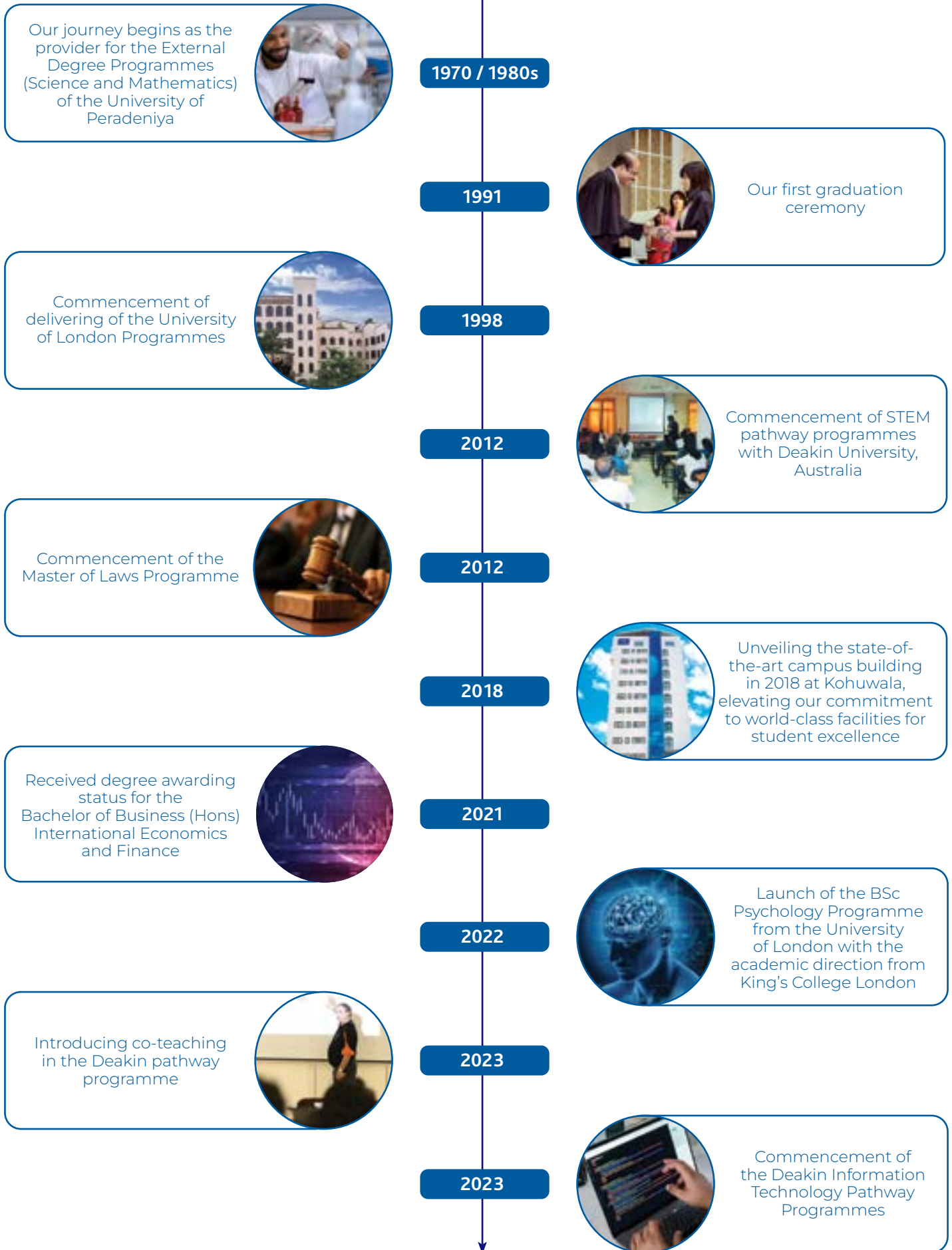
Most of our graduates secure positions in leading organisations shortly after graduation



## Connected to Industry

Our industry partnerships prove that our curriculum remains current and our graduates are job-ready

# Our Journey



# Notable Alumni



**Dr. Milhan Ikram Mohamed**

Bachelor of Laws (1st Class Honours, 2010)

- Attorney-at-Law & Counsel at Chamber of Mr. Sanjeeva Jayawardena, President's Counsel
- LLM in Commercial Law Starred First Class, University of Cambridge
- PhD in Law, University of Cambridge



**Mr. Umar Ghouse**

Bachelor of Science in Economics and Finance (2015)

- Full Stack Engineer, Cogsy



**Ms. Raisa Wickramasinghe**

Bachelor of Laws (2014)

- Attorney-at-Law (Sri Lanka), Solicitor (Australia)
- Master of International Relations (University of La Trobe, 2017)
- Juris Doctor (RMIT Australia, 2018)



**Ms. Nishika Aponso**

Bachelor of Science in Mathematics and Economics (First Class Honours, 2012)

- Head of Innovation, MAS Areli



**Mr. Kulunu Jayamanne**

Bachelor of Science in International Relations (2017)

- Coordination and Partnerships Associate and Youth Programme Focal Point, UNDP



**Mr. Mahela Liyanage**

Bachelor of Laws (2010)

- Attorney-at-Law
- Master of Laws (NUS)
- Regional Head of Legal Daraz Group (Alibaba Group)



**Mr. Nigel Gray**

Bachelor of Science in Economics and Management (First Class Honours, 2019)

- Master of Education - MEd, Education Policy and Analysis, Harvard Graduate School of Education



**Mr. Janeen Fernando**

Bachelor of Science in Sociology (First Class Honours, 2011)

- Peace and Development Advisor, Maldives - United Nations
- The Gates Cambridge Scholarship Recipient
- Master of Philosophy (MPhil) International Relations, University of Cambridge



**Mr. Senith Abeyanayake**

Bachelor of Science in Economics and Finance (First Class Honours, 2020)

- Chevening Scholar
- MSc in Economics for Development, University of Oxford



**Ms. Sajani Siriwardena**

Bachelor of Engineering (Hons.)-Civil Engineering Major (2022)

- PhD in Transport Engineering (Deakin University)
- Associate Lecturer at Deakin University



**Mr. Yasir Irshad**

Bachelor of Engineering (Hons.)-Civil Engineering Major (2023)

- Graduate Engineer, Randall Industries, Australia
- Project Impact Award (2022)
- Fred Green Memorial Award (2022)



**Mr. Stefan Jaro**

Bachelor of Science in Economics (First Class Honours, 2014)

- Senior Product Manager, Data Governance Platforms, Grab, Singapore



# Awarding Bodies



UGC/MoHE Approved

## Royal Institute of Colombo

As an awarding body our Bachelor of Science (Honours) in Biomedical Sciences, and Bachelor of Business (Honours) in International Economics and Finance degrees have received official recognition from the Ministry of Higher Education and the University Grants Commission. This reaffirms our commitment to high-quality education.



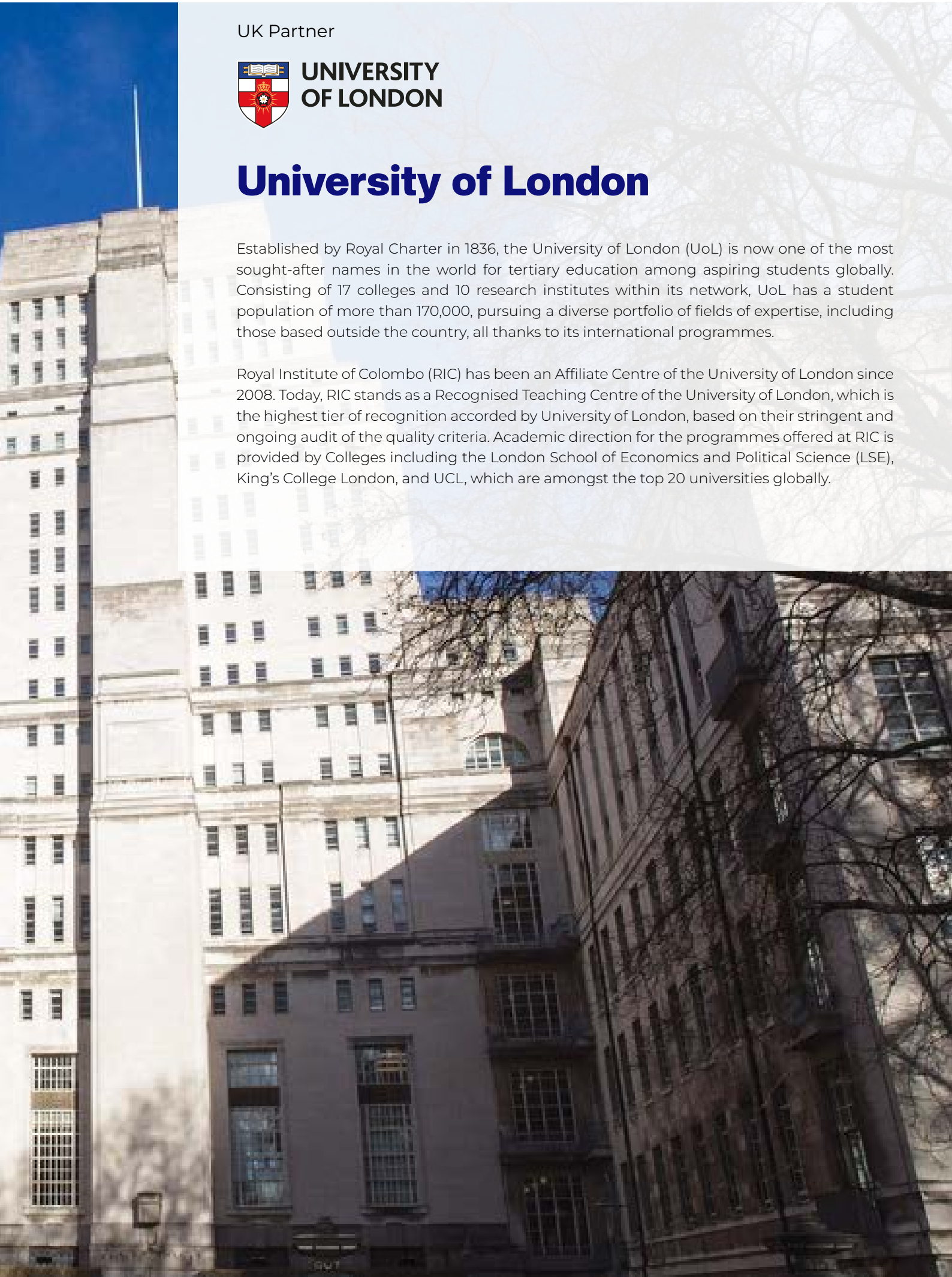
UK Partner

**UNIVERSITY  
OF LONDON**

## University of London

Established by Royal Charter in 1836, the University of London (UoL) is now one of the most sought-after names in the world for tertiary education among aspiring students globally. Consisting of 17 colleges and 10 research institutes within its network, UoL has a student population of more than 170,000, pursuing a diverse portfolio of fields of expertise, including those based outside the country, all thanks to its international programmes.

Royal Institute of Colombo (RIC) has been an Affiliate Centre of the University of London since 2008. Today, RIC stands as a Recognised Teaching Centre of the University of London, which is the highest tier of recognition accorded by University of London, based on their stringent and ongoing audit of the quality criteria. Academic direction for the programmes offered at RIC is provided by Colleges including the London School of Economics and Political Science (LSE), King's College London, and UCL, which are amongst the top 20 universities globally.





Australian Partner



CRICOS Provider Code: 00113B

## Deakin University

Initiated in 1974, Deakin University was one of the first universities to begin in the state of Victoria in Australia. Now accredited with nominations from some of the world's leading University Ranking corporations, Deakin is now the preferred choice for students not just in Australia, but around the world. Deakin is ranked as the #1 university in Victoria for teaching quality and student support according to 2022 Student Experience Survey, Quality Indicators for Learning and Teaching (QILT).

In the realm of international education, RIC and Deakin University, Australia have joined forces to provide a transformative pathway programme in 2012, catering to the aspirations of Sri Lankan students seeking world-class education with Australian teaching experience. One of the key advantages of this pathway programme is the opportunity for students to experience Australian teaching with the newly introduced co-teaching initiative. This allows students to learn face-to-face from Australian lecturers from Deakin University and RIC lecturers.

# Academic Direction for University of London Degrees at RIC

At RIC, our students benefit from academic direction provided by prestigious institutions such as the London School of Economics and Political Science, University College London, and King's College London, among others. This collaboration ensures access to top-tier resources, leading experts, and cutting-edge research, enriching their educational experience and enhancing academic outcomes.



Learning Resources



Examination



Research



A top-ranked Economics Department globally, LSE directs RIC's degree programmes, including University of London's Undergraduate Management degrees (EMFSS) and Law degrees, ensuring prestigious qualifications.



Academic direction for the BSc Psychology programme is provided by King's College London, with enriched content developed by the Institute of Psychiatry, Psychology & Neuroscience (IoPPN). King's College London is globally known for their research excellence and is ranked 7th in the QS UK University rankings 2023.



UCL, with 21 Nobel Prize winners, directs RIC's programmes through the Laws Consortium. It's ranked 8th globally by QSWUR 2024 and guides University of London's laws qualifications.



Queen Mary University of London, rooted in philanthropy since 1887, is a leading member of the University of London. Through the Laws Consortium, it directs RIC's laws qualifications.



Founded in 1823, Birkbeck uniquely supports part-time study for mature students. Renowned for humanities, social sciences, and natural sciences research, it directs RIC's laws qualifications through the Laws Consortium.



SOAS, founded in 1916, is a leading centre for Asia, Africa, and the Middle East studies. It directs RIC's laws qualifications through the Laws Consortium.

# Degrees We Offer

## Laws Programmes, University of London

	Standard entry route	Graduate entry route	Duration	Intakes	Page Number
Certificate of Higher Education in Common Law			1 year	July/Sep	36
Bachelor of Laws (LLB) Standard Entry (Part-time study option available)	●		3 years	July/Sep	36
Bachelor of Laws (LLB) Graduate Entry (Part-time study option available)		●	2-3 years	July/Sep	37

## EMFSS Programmes, University of London

Certificate of Higher Education in Social Sciences			1 year	July/Sep	40
Bachelor of Science in Economics and Finance	●	●	3 years	July/Sep	41
Bachelor of Science in Finance	●	●	3 years	July/Sep	42
Bachelor of Science in Business and Management	●	●	3 years	July/Sep	42
Bachelor of Science in Data Science and Business Analytics	●	●	3 years	July/Sep	43
Bachelor of Science in Economics	●	●	3 years	July/Sep	44
Bachelor of Science in Accounting and Finance	●	●	3 years	July/Sep	44
Bachelor of Science in Economics and Management	●	●	3 years	July/Sep	45
Bachelor of Science in Economics and Politics	●	●	3 years	July/Sep	46
Bachelor of Science in International Relations	●	●	3 years	July/Sep	46
Bachelor of Science in Management and Digital Innovation	●	●	3 years	July/Sep	47
Bachelor of Science in Mathematics and Economics	●		3 years	July/Sep	48
Bachelor of Science in Politics and International Relations	●	●	3 years	July/Sep	48

## Psychology Programme, University of London

Bachelor of Science in Psychology	●		3/3.5 years	April/Oct	54
-----------------------------------	---	--	-------------	-----------	----

## Science Pathways, Deakin University

Bachelor of Biomedical Science	●		3 years*	Feb/Sep	58
Bachelor of Environmental Science and Sustainability	●		3 years*	Feb/Sep	58
Bachelor of Forensic Science	●		3 years*	Feb/Sep	59
Bachelor of Science	●		3 years*	Feb/Sep	60
Bachelor of Zoology and Animal Science	●		3 years*	Feb/Sep	60

## Engineering Pathways, Deakin University

Bachelor of Engineering (Honours) - Civil Engineering Major	●		4 years*	Feb/Sep	64
Bachelor of Engineering (Honours) - Electrical and Renewable Energy Engineering Major	●		4 years*	Feb/Sep	64
Bachelor of Engineering (Honours) - Environmental and Sustainability Engineering Major	●		4 years*	Feb/Sep	65
Bachelor of Engineering (Honours) - Mechanical Engineering Major	●		4 years*	Feb/Sep	66
Bachelor of Engineering (Honours) - Mechatronics Engineering Major	●		4 years*	Feb/Sep	66

## Information Technology Pathways, Deakin University

Bachelor of Software Engineering (Honours)	●		4 years*	Sep	70
Bachelor of Data Science	●		3 years*	Sep	70

## UGC/MoHE Approved Programmes

Bachelor of Business (Hons.) in International Economics and Finance	●		4 years	May/Sep	76
Bachelor of Science (Hons.) in Biomedical Sciences	●		4 years	May/Sep	78

## Foundation Programmes

University of London Foundation Programme			1 year	Aug	30
RIC Foundation Programme for Deakin pathways			0.5/1 year	Feb/Sep	30

\* Students studying Deakin programmes at RIC need to transfer to Deakin University, Australia to complete the final two years of their degree programme





# RIC Offers You the Best in the World



**6<sup>th</sup> in the world for Accounting & Finance**

The London School of Economics and Political Science (LSE) is ranked 6th in the world for Accounting and Finance\*

\*QS World University Rankings 2024



**Among the top 1% of universities worldwide**

Deakin University, Australia is ranked among the top 1% of universities worldwide\*

\*Academic Ranking of World Universities (ARWU) Rankings 2023



**7<sup>th</sup> in the world for Law**

The London School of Economics and Political Science (LSE) is ranked 7th in the world for Law\*

\*QS World University Rankings 2024



**Ranked among the top 13 in the world**

The King's College London is ranked among the top 13 in the world for Psychology\*

\*QS World University Rankings 2023 by subject: Psychology



**Among the top 8 universities in the UK**

The law school of Queen Mary University of London is ranked among the top 8 in the UK\*

\*Guardian University Guide 2022



**Ranked in the top 3 in the UK**

The University College London is among the top 3 universities in the UK\*

\*Complete University Guide 2023

# Why RIC



## Over 40 years of academic excellence

With over 40 years of commitment to academic excellence, RIC stands as a beacon of educational distinction. Our tradition of quality education, innovation, and student success has produced generations of accomplished graduates. Join us at RIC, where tradition meets modernity, ensuring a cutting-edge education for success in a rapidly evolving global landscape.



## Learn from world-class experts

At RIC, students learn from distinguished international lecturers, including those from Deakin University and University of London-affiliated institutions. This provides access to diverse perspectives, cutting-edge research, and world-class expertise, preparing students for success in a competitive world. Join us for an international education beyond borders and excellence without limits.



## Academic faculty and staff

At RIC, our academic staff are dedicated professionals who excel in teaching, research, and mentorship, inspiring students with real-world insights and fostering critical thinking and creativity. Faculty members provide personalised support, empowering students to succeed in their chosen fields through engaging lectures and collaborative projects.



## Graduate employability

Our academic programmes provide practical experience, making our students both knowledgeable and highly employable. Employers consistently seek RIC graduates for their exceptional skills and readiness to contribute. According to the RIC Graduate Outcomes Survey 2024, over 90% of our graduates were employed at graduation, with the rest pursuing higher studies.





### Student support

At RIC, we provide comprehensive support to ensure student success and well-being. Our academic advisers offer personalised course and degree planning, while our counselling services support mental health. We prioritise inclusivity with disability access, career guidance, library support, and active student organisations, fostering a thriving academic and personal environment for all students.



### Vibrant student life

At RIC, we believe that a vibrant student life cultivates community and belonging. We provide diverse opportunities for students to engage, connect, and thrive; from clubs to recreational activities, there's always something happening. We support diverse interests, fostering leadership skills and lifelong friendships.



### Alumni network of over 1500

RIC's alumni network boasts 1500+ accomplished individuals globally, leaders shaping various industries. They support current students through mentorship, networking, and professional development, creating a global community of achievers and advocates for lifelong connections and opportunities.



### Work integrated learning

At RIC, we emphasise practical industry experience for students through activities like site visits, guest lectures, and collaborative projects. These experiences help students interact with professionals, apply knowledge, and develop skills for future success, ensuring they graduate well-prepared for tomorrow's job market.

# Our Facilities

## 01. Moot Court

Moot Court at RIC simulates the courtroom environment, giving law students a practical understanding of legal practice.

## 02. Computer Laboratory

RIC Computer Lab is well equipped with the latest computers and all necessary software that you can use for your educational requirements.

## 03. Classrooms

RIC's spacious classrooms are supported by a team providing high-quality learning environments, integrating technology for hybrid learning.

## 04. Biology, Chemistry & Physics Laboratories

Biology, Chemistry & Physics Laboratories at RIC provide state-of-the-art equipment for various scientific applications, supporting students pursuing pathways to Science, Engineering, Environment and Information Technology degrees from Deakin University.

## 05. Sports Complex

RIC's Sports Complex offers indoor and outdoor facilities including a swimming pool, badminton and basketball courts, and a gymnasium, with personalised guidance for fitness.

## 06. Library

The RIC Library offers comprehensive resources including e-books, Wi-Fi access, and online learning support from the University of London and Deakin University.

## 07. Auditorium

RIC Auditorium accommodates events with modern amenities for up to 700 participants, suitable for ceremonies, lectures, and entertainment events.

## 08. Conference Room

The Conference Room at RIC provides a professional meeting environment with modern furnishings and advanced audiovisual equipment for conferences and meetings.





# Clubs and Societies

- Buddhist Society
- Christian Society
- Hindu Society
- Islamic Society
- Chamber Choir
- Entertainment Media Appreciation Club (EMAC)
- Entrepreneurs Club
- Film and Theatre Club
- Law Students' Association of RIC (LSARIC)
- Press Club
- RIC Engineering and Science Society (RIC ESS)
- Rotaract club
- Engineering and Science Society
- Sports Clubs
  - Athletics
  - Football
  - Netball
  - Aquatic Sports
  - Basketball
  - Cricket
  - Rugby
  - Table Tennis





# Career Guidance Unit - RIC LEAP

The Career Guidance Unit (CGU) of RIC, referred to as RIC LEAP (Learn, Engage, Apply, and Perform), is exclusively designed with RIC undergraduates at the forefront of its mission. Our key objective is to guide students and ensure they are equipped with the necessary skills to pursue rewarding careers and navigate the challenges of corporate life. Some of the key activities undertaken by CGU are listed below.

## Internship placement assistance

We assist students in securing internships by connecting them with reputable organisations, providing valuable hands-on experience in their respective fields of study.

## Resume/CV building workshops

Through interactive workshops, we help students develop effective resumes and CVs that showcase their skills, achievements, and experiences, increasing their chances of securing internship and job opportunities.

## Soft skills development workshops

Our workshops focus on enhancing essential soft skills such as communication, teamwork, problem-solving, and leadership, empowering students to thrive in professional settings.

## Mock interviews and interview preparation

We conduct mock interviews to simulate real-life scenarios, offering students constructive feedback to confidently navigate job interviews and highlight their qualifications and abilities.

## Mentorship programmes

In collaboration with our alumni network, we offer mentorship programmes connecting students with successful graduates for guidance, mentorship, and potential career connections.

## Career fairs and alumni networking

Our career fairs bring together employers and students, providing opportunities for job exploration and networking. Additionally, alumni networking connects students with successful graduates for mentorship and potential career connections.

## Industry visits

We organise visits to various industries, offering students firsthand exposure to different work environments, industry operations, trends, and career pathways.

## Career counselling and guidance

Our dedicated team of career counsellors offer personalised guidance to help students explore career options, assess their strengths and interests, and make informed decisions about their future career paths.







# Academic Scholarships Scheme

(Academic year 2024-25)

## Scholarship for High Achievers

This scholarship recognises and rewards outstanding academic performance among students. This scholarship scheme aims to support high achievers by providing financial assistance towards their tuition fees at RIC, thereby encouraging and motivating students to excel in their studies. The scholarship is awarded to students meeting the eligibility criteria, including exceptional academic achievement in their O/L and A/L examinations. By offering this scholarship, we seek to appreciate talented students to pursue their academic goals and contribute positively to their communities and beyond.

## Performance-Based Scholarship

Performance-based Scholarship aims to incentivise and reward academic excellence of students enrolled in the LLB (UoL) and various EMFSS programmes (UoL), including IEF (Direct Route only) and BSc Psychology (UoL). This scholarship aims to reward and encourage high-performing students at their end of year examinations based on their academic achievements as well as attendance for lectures at RIC. By maintaining consistent attendance for lectures, high average and excelling in fresh subjects at examinations, students can qualify for substantial tuition fee reductions. This initiative encourages students to consistently perform at their best and supports their educational and professional aspirations.



# Co-Curricular Scholarship Scheme

(On tuition fees only)

The Scholarship for Co-curricular Excellence is a scholar initiative aimed at providing an unrivalled level of support to the brightest and emerging talents in the field of sports, public speaking and leadership. It is offered to the students who demonstrate exemplary standards of effort, progress, involvement, contribution, and influence on the peers. A maximum of 5 scholarships will be awarded to outstanding candidates across all undergraduate programmes at RIC.

## Eligibility criteria

- Have strong leadership qualities and potential
- Have excellent co-curricular activities record that may be in terms of:
  - Elite sports performance in terms of performance at the inter-school / zonal / national / international tournaments
  - Volunteering for community service
  - Active involvement in school clubs and societies activities
  - Leadership experience and engagement in professional development programmes
- Possess an all-rounder record of involving in various sports and extra-curricular activities
- Possess good academic records at the A-Levels
- Be applying for admissions to the first-year undergraduate programme at RIC offered by the University of London / Deakin University / UGC- accredited programme
- Successful candidates are expected to contribute to the development of sports, personality development and student engagement at RIC through the respective student clubs and societies

## Scholarship benefits

- 50% scholarship on 1st year tuition fees to the selected candidate
- 65% scholarship on 1st year tuition fees for exceptional performance in both academics and extra-curricular

## Scholarship terms and conditions

These terms and conditions relate to the Co-curricular Excellence scholarship that you are applying for

- The maximum value of the scholarship is 65% of the indicative semester fee payable to RIC, depending on the academic and co-curricular achievements of the student
- This scholarship is only valid for the first year of registration in a specific course at RIC
- The deadline to apply for the scholarship ends with the deadline to register for the relevant RIC programme that the student has applied for. This scholarship will lapse if the scholarship application form along with the acceptance of these Terms and Conditions are not received before this registration deadline
- This scholarship is only applicable to students commencing in an undergraduate degree (within the UoL/Deakin/MOHE (Direct Entry) programmes)
- The scholarship will not be applied to additional credit points required for course completion in the event that you fail, repeat units or undertake additional units
- The scholarship is only applicable to the course the student has initially applied for. Course transfers will require RIC approval
- The scholarship cannot be deferred from the commencement intake the student has initially applied for. Deferrals will require RIC approval and the scholarship will be reassessed if the student defers the course
- The scholarship will not continue to be applied if the student discontinues his/her studies at RIC. If the student applies for readmission and wishes to be considered for a scholarship, the student must re-apply for a scholarship
- The value of the scholarship cannot be redeemed for direct payment. The scholarship is not refundable
- The scholarship will not be applied to a student's record without an enrolment status of good standing; for example, for reasons of non-payment of fees, misconduct or having an encumbrance on a student's enrolment record. RIC has the sole authority to cancel the scholarship if the student is found guilty of any misconduct
- Please note that if you are eligible for more than one RIC scholarship, only one scholarship will be applied to your student record and there will be no provision of two scholarships bundled together. In most cases, the scholarship of higher value will be applied, provided you apply within the specified timeframe and satisfy the conditions of that scholarship

# Vibrant Student Life







# International Foundation Programmes

Our foundation programmes offer a strong academic foundation for students after O/L to fast-track their higher studies and graduate from University of London or pursue their pathway to Deakin University in Australia. The RIC Foundation for Deakin pathway also provides an option for students after A/L who do not meet the minimum entry requirements for direct enrollment, to keep their dreams alive and become eligible to commence the pathway to Deakin University.

## International Foundation Programmes

University of London Foundation Programme

RIC Foundation Programme for Deakin pathway

Please scan the QR code for frequently asked questions



## University of London Foundation Programme

The RIC-UoL International Foundation Programme (IFP) is specifically designed to bridge the gap for students who wish to commence University of London undergraduate programmes with an O/L education background, as well as for those who do not meet the minimum entry requirements to enroll in any of the UoL programmes at RIC. This pathway provides the opportunity for students to complete their undergraduate studies faster than students coming with an A/L background. This comprehensive programme provides a solid academic foundation, equipping students with the essential skills and knowledge needed to succeed in higher education.

### Entry requirements:

- Completion of Ordinary Level examination or equivalent
- Have passed a minimum of 4 subjects inclusive of English and Mathematics with grades A-C or equivalent
- Meet the English language requirements
- Pass the internal Admission Test and interview
- Should be 16+ years old by the September intake

### First year

Four courses chosen from

- FP0001 Mathematics and Statistics
- FP0008 Accounting and Finance
- FP0002 Economics
- FP0009 Law
- FP0005 Social Psychology
- FP0010 Business and Management

On successful completion of the IFP, you have entry to a wide range of degree programmes offered through University of London subjected to an aptitude screening process.

### Degree programmes offered:

#### EMFSS programmes:

- BSc Accounting and Finance
- BSc Business and Management
- BSc Data Science and Business Analytics
- BSc Economics
- BSc Economics and Finance
- BSc Economics and Management
- BSc Economics and Politics
- BSc Finance
- BSc International Relations
- BSc Management and Digital Innovation
- BSc Mathematics and Economics
- BSc Politics and International Relations

#### Laws programme:

- LLB

#### Psychology programme:

- BSc Psychology
- IFP will be considered for competitive entry with other equivalent qualifications, such as the Advanced Level and the International Baccalaureate (IB).
- All examinations are marked and verified by the University of London.
- Candidates who pass all four courses are awarded the University of London International Foundation Certificate with a grade of 'Pass', 'Merit' or 'Distinction'

## RIC Foundation Programme for Deakin pathway

This Foundation Programme is tailored for students aiming to pursue Deakin pathway programmes at RIC. It is suited for those with an O/L education background or having completed A/L but not having enough results to directly enter the pathway. This foundation programme offers students an additional benefit of better preparing for their degree. Through this comprehensive programme, students gain a solid academic foundation, acquiring the essential skills and knowledge needed for success in higher education.

### Entry requirements:

- Applicant must hold at least 6 C passes and minimum grade of B for Science / Biology/ Mathematics or acceptable equivalents of Ordinary Level or completion of Advanced Level
- Pass the internal Admission Test and interview

### Six months/ one year programmes

Route 1: For students who do not meet the direct entry requirements to the Engineering pathway

- Mathematics (Major subject)
- Physics (Major subject)
- Chemistry (Minor subject)
- Information technology (Minor subject)

Transfer to first year of Deakin Engineering pathway programme

Route 2: For students who do not meet the direct entry requirements to the Science / Environmental Science pathway

- Biology (Major subject)
- Chemistry (Major subject)
- Physics (Minor subject)



- Mathematics (Minor subject)
- Information Technology (Minor subject)

Transfer to first year of Deakin Science / Environmental Science pathway programmes

Route 3: For students who do not meet the direct entry requirements to the Information Technology pathway

- Mathematics (Major subject)
- Physics (Major subject)
- Information technology (Major subject)

Transfer to first year of Deakin information technology pathway programme

Six month programme is applicable for students upon completion of Advanced Level examination without satisfying direct entry requirements to commence the Deakin pathway.

One year programme is applicable for students upon completion of only Ordinary Level examination.





The background of the page is a photograph of a classroom. In the foreground, a student in a dark blue t-shirt is seen from the side, looking towards the front. Behind him, other students are visible, including one in a red t-shirt and another in a blue shirt. The lighting is bright, suggesting a window in the background. The overall atmosphere is that of an active learning environment.

# **Undergraduate Degree Programmes**



# Laws Programmes

## University of London

Awarding Body



**UNIVERSITY  
OF LONDON**

Our University of London Laws programme provides students in Sri Lanka with the opportunity to earn a prestigious law degree without having to leave their home country. This programme equips students with critical thinking, analytical, and research skills, preparing them for successful careers in law both locally and internationally.

The curriculum includes practical experiences and opportunities for internships, enhancing employability and professional readiness. Our graduates are highly sought after by legal professionals due to their comprehensive legal knowledge and practical skills, and employers value the rigorous training and international perspective that these graduates bring to the workplace.

### Laws programmes

Certificate of Higher Education in Common Law (CertHE)

Bachelor of Laws (LLB) - Standard Entry

Bachelor of Laws (LLB) - Graduate Entry



The London School of Economics and Political Science, affiliated with the University of London's law programmes, is ranked within the top 7 worldwide for Law & Legal Studies\*

\*QS World University Rankings 2024

Please scan the QR code for frequently asked questions



### Certificate of Higher Education in Common Law (CertHE)

It serves as a stepping stone for those who are awaiting their Advanced Level results to commence their tertiary education in Law for the University of London's LLB programme. Upon successful completion, students can directly enter the second year of the Bachelor of Law programme

#### Entry requirements:

- Completion of Ordinary Level with 4 C passes including English & Sinhala/ Tamil or equivalent
- Sat for the Advanced Level examination
- Pass the internal Admission Test/ UoL Online Test and interview

#### First year

Level 4 modules

- LA1031 Legal system and method
- LA1040 Contract law
- LA1010 Criminal law
- LA1020 Public law

completion of the four core modules a student can transfer to the second year of the LLB degree programme.

### Bachelor of Laws (LLB) - Standard Entry

This is the pathway you can start upon successful completion of your Advanced Level exams. The University of London's Bachelor of Laws (LLB) Standard Entry is a three-year undergraduate programme designed to provide a comprehensive foundation for a career in law.

#### Entry requirements:

- The applicant must hold at least 2C passes and an S pass (at one and the same sitting) in Advanced Level examination or equivalent
- AND
- 4 C passes at Ordinary Level examination including English language and Sinhala/Tamil language or equivalent
- Pass the internal Admission Test and interview

#### First year

Level 4 modules

- LA1031 Legal system and method
- LA1040 Contract law\*
- LA1010 Criminal law\*
- LA1020 Public law\*

#### Second year

Level 5 modules

- A2001 Tort law\*
- LA2024 EU law\*
- LA2003 Property law\*

One of the following modules:\*\*

- LA2019 Family law
- LA2015 Commercial law
- LA2008 Administrative law
- LA2029 International protection of human rights

### Third year

Level 6 modules

- LA3005 Jurisprudence and legal theory
- LA3002 Equity and trusts\*

Two of the following modules:\*\*

- LA3021 Company law
- LA3026 Intellectual property
- LA3014 Conflict of laws
- LA3013 Public international law
- LA3025 Criminology

\*These modules are the seven foundations of legal knowledge which are required to satisfy the academic component of legal training for intending barristers.

\*\*The availability of optional modules may vary every year.

#### Job opportunities available globally

- Attorney-at-Law (Sri Lanka)
- Barrister or Solicitor (England and Wales or any other country)
- Adjudicator
- Judge
- Arbitrator
- Corporate Lawyer
- Company Secretary
- Legal Officer
- Legal Secretary
- Human Resource Officer
- Management Consultant
- Tax Consultant
- Compliance Attorney
- Policy Analyst
- Political Risk Analyst
- Legal Consultants to state and private sector entities
- Legal Analyst
- Legal Researcher
- Licensed Conveyancer
- Trademark Attorney
- Insurance Underwriter
- Patent Attorney

This list is non-exhaustive

The law schools or departments of the following Colleges of the University of London provide the academic direction for the University of London Undergraduate Laws qualifications.

## Bachelor of Laws (LLB) – Graduate Entry

The University of London's Bachelor of Laws (LLB) - Graduate Entry programme is a fast-track option designed for individuals who already hold a bachelor's degree in another field but are interested in pursuing a career in law.

### Entry requirements:

- A first degree from a recognised university acceptable to UoL
  - The applicant must hold at least 2C passes and an S pass (at one and the same sitting) in Advanced Level examination or equivalent
- AND
- 4 C passes at Ordinary Level examination including English language and Sinhala/Tamil language or equivalent
  - Pass the internal Admission Test and interview

### First year

Level 4/5 modules

- LA1040 Contract law\*
- LA1010 Criminal law\*
- LA1020 Public law\*
- LA2001 Tort law\*

### Second year

Level 4/5 modules

- LA2024 EU law\*
- LA2003 Property law\*
- LA3002 Equity and trusts\*
- LA3005 Jurisprudence and legal theory

One of the following modules\*\*

- LA3021 Company law
- LA3014 Conflict of laws
- LA3025 Criminology

- LA3026 Intellectual property
- LA3013 Public international law

### Important

A Graduate Entry LLB students will only be permitted to register for the LLB for a minimum period of two years provided that they have passed the three Level 4 modules and Tort law in their first year of study on the first attempt in the May/June assessments.

\*These modules are the seven foundations of legal knowledge which are required to satisfy the academic component of legal training for intending barristers.

\*\*The availability of optional modules may vary every year.

### Job opportunities available globally

- Attorney-at-Law (Sri Lanka)
- Barrister or Solicitor (England and Wales or any other country)
- Adjudicator
- Judge
- Arbitrator
- Mediator
- Corporate Lawyer
- Company Secretary
- Legal Officer
- Legal Secretary
- Human Resource Officer
- Management Consultant
- Tax Consultant
- Compliance Attorney
- Policy Analyst
- Political Risk Analyst
- Legal Consultants to state and private sector entities
- Legal Analyst
- Legal Researcher
- Licensed Conveyancer
- Trademark Attorney
- Insurance Underwriter
- Patent Attorney

This list is non-exhaustive



*“Choosing the University of London Laws programmes at Royal Institute of Colombo has been a strategic decision. I can pursue an internationally acclaimed law degree without the need to travel to London, right here in Sri Lanka. This unique opportunity not only saves time and expenses but also ensures I receive a top-notch legal education recognised worldwide, setting a solid foundation for my future legal career”*

**Disuri Panditharatne**  
Laws programme

The law schools or departments of the following Colleges of the University of London provide the academic direction for the University of London Undergraduate Laws qualifications.





# Economics, Management, Finance and Social Sciences Programmes (EMFSS)

University of London

Awarding Body



**UNIVERSITY  
OF LONDON**

Academic Direction



THE LONDON SCHOOL  
OF ECONOMICS AND  
POLITICAL SCIENCE ■

The Economics, Management, Finance, and Social Sciences Programmes (EMFSS) is a collaboration between Royal Institute of Colombo (RIC) and the University of London (UoL), offering you the opportunity to earn a prestigious University of London degree in Sri Lanka. With academic direction from the London School of Economics and Political Science (LSE), this programme provides a comprehensive education in economics, management, finance, and social sciences.

The EMFSS degrees are 3-year programmes designed to equip you with the knowledge and skills necessary for success in various professional fields. Throughout the programme, you will benefit from world-class teaching and resources, ensuring that you receive a high-quality education recognised globally.

## EMFSS programmes

Certificate of Higher Education in Social Sciences (CHESS)

BSc Economics and Finance

BSc Finance

BSc Business and Management

BSc Data Science and Business Analytics

BSc Economics

BSc Accounting and Finance

BSc Economics and Management

BSc Economics and Politics

BSc International Relations

BSc Management and Digital Innovation

BSc Mathematics and Economics

BSc Politics and International Relations

Please scan the QR  
code for frequently  
asked questions



## Certificate of Higher Education in Social Sciences (CHESS)

The Certificate of Higher Education in Social Sciences is an undergraduate first-year equivalent qualification offered within the Economics, Management, Finance, and Social Sciences Programmes (EMFSS) by the University of London (UoL) and delivered through Royal Institute of Colombo (RIC) in Sri Lanka.

### Entry requirements:

- Hold either one Advanced Level grades A - E plus 4 Ordinary Level grades A - C
- OR
- 6 Ordinary Level grades A - C or equivalent
- This should include Ordinary Level Mathematics grade C
- Meet the English language requirements
- Pass the internal Admission Test and interview

### First year CHESS route

#### Subject combination 01

- EC1002 Introduction to economics
- MT1186 Mathematical methods
- ST1215 Introduction to mathematical statistics
- OR
- ST104a Statistics 1 (half course) and
- ST104b Statistics 2 (half course)
- FN1202 Introduction to Finance

#### Recommended degrees to pursue in the second and third year

- BSc Economics
- BSc Economics and Finance

#### Subject combination 02

- EC1002 Introduction to economics
- MT105a Mathematics 1 (half course)
- AND

ST104a Statistics 1 (half course)

- MN1178 Business and management in global context
- AC1025 Principles of accounting

#### Recommended degrees to pursue in the second and third year

- BSc Business and Management
- BSc Economics and Management

#### Subject combination 03

- EC1002 Introduction to economics
- MT105a Mathematics 1 (half course)
- AND

ST104a Statistics 1 (half course)

- FN1202 Introduction to Finance
- AC1025 Principles of accounting

#### Recommended degrees to pursue in the second and third year

- BSc Accounting and Finance
- BSc Finance

#### Subject combination 04

- EC1002 Introduction to economics
- MT1173 Algebra AND MT1174 Calculus
- OR
- MT1186 Mathematical methods AND MN1178 Business and management in a global context
- ST1215 Introduction to mathematical statistics

#### Recommended degrees to pursue in the second and third year

- BSc Data Science and Business Analytics
- BSc Mathematics and Economics

#### Subject combination 05

- EC1002 Introduction to economics
- ST104a Statistics 1 AND MT105a Mathematics 1
- PS1130 Introduction to international political thought
- PS1172 Introduction to political science

#### Recommended degrees to pursue in the second and third year

- BSc Economics and Politics

#### Subject combination 06

- IR1198 International relations; theories, concepts and debates
- PS1130 Introduction to international political thought
- SC1179 Contemporary sociology in a global age
- DV1171 Introduction to international development

#### Recommended degrees to pursue in the second and third year

- BSc International Relations

#### Subject combination 07

- IR1198 International relations: theories, concepts and debates
- PS1130 Introduction to international political thought
- OR
- PS1172 Introduction to political science.
- One 100 course (or two half courses from selection group F1)
- One 100 course (or two half courses from selection group F1)

#### Recommended degrees to pursue in the second and third year

- BSc Politics and International Relations

#### Subject combination 08

- IS1060 Introduction to information systems
- IS1060 Introduction to information systems
- IS1181 Digital infrastructures for business
- MT105a Mathematics 1 (half course)
- AND
- ST104a Statistics 1 (half course)
- OR
- AC1025 Principles of accounting
- OR
- SC1179 Contemporary sociology in a global age

#### Recommended degrees to pursue in the second and third year

- BSc Management and Digital Innovation

## BSc Economics and Finance

The BSc Economics and Finance programme at RIC offers a comprehensive education in both economics and finance, preparing students for diverse career paths in the financial sector. You'll study units like Microeconomics, Macroeconomics, Mathematical Statistics, and Corporate Finance, gaining skills to analyse economic trends and evaluate financial risks. Career options include financial analyst, investment banker, economic consultant, and risk manager, providing graduates with diverse opportunities in finance and beyond.

### Entry requirements:

- Applicant must hold at least 5 grades A – C at Ordinary Level, and 3 grades A – E at Advanced Level or equivalent  
This should include Ordinary Level Mathematics grade C or equivalent  
Mathematics at Advanced Level is recommended, but not compulsory
- Pass the internal Admission Test and interview

### First year

Level 100 courses

- EC1002 Introduction to economics
- ST1215 Introduction to mathematical statistics  
OR  
ST104a Statistics 1 (half course)  
AND  
ST104b Statistics 2 (half course)
- MT1186 Mathematical methods  
OR  
MT105A Mathematics 1  
AND

- MT105B Mathematics 2
- FN1202 Introduction to Finance

### Second year

Level 200 and 300 courses

- EC2020 Elements of econometrics
- EC2065 Macroeconomics
- EC2066 Microeconomics
- FN2191 Principles of corporate finance

### Third year

Level 200 and 300 courses

- FN2203 Principles of Asset Pricing
- EC3115 Monetary economics
- FN3142 Quantitative finance
- One 200 or 300 (or two half courses from any selection group)

### Recommended optional courses

- EC3016 International economics
- MT3095 Further mathematics for economists
- MN2032 Management science methods
- ST2187 Business analytics, applied modelling and prediction
- EC3120 Mathematical economics
- ST3188 Statistical methods for market research

Graduate entry route comprises 9 full courses (or equivalent)

### Job opportunities available globally

- Financial analyst/Financial economist/
- Financial risk analyst
- Economist
- Market research analyst
- Actuary
- Data analyst
- Investment analyst
- Economic researcher

This list is non-exhaustive



*“The University of London’s Economics and Finance programme at Royal Institute of Colombo has profoundly impacted my academic journey. The programme’s comprehensive and well-structured curriculum has provided me with a deep and thorough understanding of economic and financial theories. The lectures are engaging and insightful, delivered by academic staff who are not only knowledgeable but also approachable and supportive. Their dedication to teaching and their friendly demeanor have made even the most challenging topics manageable and interesting. This blend of high-quality education and an encouraging learning environment has made my experience both rewarding and enjoyable.”*

**Alora Winston**  
EMFSS Programmes

## BSc Finance

The BSc Finance programme offered through the EMFSS programme at Royal Institute of Colombo (RIC) focuses on financial markets, investment analysis, and corporate finance. You'll study units such as Financial Markets and Institutions, Investment Analysis, Corporate Finance, and Risk Management. This programme prepares you for careers in investment banking, asset management, financial planning, and corporate finance. Graduates may pursue roles as financial analysts, investment bankers, portfolio managers, or risk managers.

### Entry requirements:

- Applicant must hold at least 5 grades A – C at Ordinary Level, and 3 grades A – E at Advanced Level or equivalent  
This should include Ordinary Level Mathematics grade C or equivalent
- Pass the internal Admission Test and interview

### First year

Level 100 courses

- EC1002 Introduction to economics
- ST104A Statistics 1  
AND  
MT105A Mathematics 1
- FN1202 Introduction to Finance
- AC1025 Principles of accounting

### Second year

Level 200 and 300 courses

- FN2191 Principles of corporate finance
- EC2065 Macroeconomics  
OR  
EC2066 Microeconomics

- FN2029 Financial intermediation

### Third year

Level 6 modules

- FN3204 Investments & Portfolio Management
- One 300 course from Selection groups AB
- One 300 course (or two half courses from any Selection group)
- FN2203 Principles of Asset Pricing

#### Recommended optional courses

- AC3059 Financial management
- AC3093 Auditing and assurance
- MN2032 Management science methods
- AC2097 Management Accounting
- AC2091 Financial Reporting
- ST3188 Statistical methods for market research

Graduate entry route comprises 9 full courses (or equivalent)

### Job opportunities available globally

- Accountant
- Investment adviser
- Finance technology developer
- Financial analyst/Financial economist/Financial risk analyst
- Business developer
- Market research analyst

This list is non-exhaustive

## BSc Business and Management

The BSc Business and Management programme at RIC offers a comprehensive understanding of business principles, covering marketing, operations, human resources, and strategic management. You'll study units like Marketing Management, Operations Management, Human Resource Management, and Strategic Management, preparing you for roles such as marketing manager, operations manager, human resource manager, and business consultant.

### Entry requirements:

- Applicant must hold at least 5 grades A – C at Ordinary Level, and 3 grades A – E at Advanced Level or equivalent
- This should include Ordinary Level Mathematics grade C or equivalent
- Pass the internal Admission Test and interview

### First year

Level 100 courses

- EC1002 Introduction to economics
- ST104a Statistics 1 (half course)  
AND  
MT105a Mathematics 1 (half course)
- MN1178 Business and management in a global context
- AC1025 Principles of accounting

### Second year

Level 200 and 300 courses

- MN2177 Core management concepts
- FN2203 Principles of Asset Pricing  
OR  
FN2191 Principles of corporate finance

OR

MN3194 Entrepreneurship

- MN2032 Management science methods
- One 100, 200 or 300 course (or two half courses) from any selection group

### Third year

Level 6 modules

- MN3141 Marketing management
- AC3059 Financial management
- One 200 or 300 course from selection group M
- One 300 course from selection group M

#### Recommended optional courses

- IS3183 Management and social media
- IS3167 Management and innovation of e-business
- DV3165 Development management
- ST3188 Statistical methods for market research
- IS2184 Information systems management
- AC2091 Financial reporting
- AC2097 Management accounting

Graduate entry route comprises 9 full courses (or equivalent)

### Job opportunities available globally

- Digital marketing and social media strategist
- Digital business analyst/Digital transformation analyst/Consumer insight analyst
- Business developer/Management and consultancy
- E-commerce(Web development administration/ designer)
- Market research analyst
- Corporate sector

This list is non-exhaustive

## BSc Data Science and Business Analytics

BSc Data Science and Business Analytics: You'll study units such as programming for data science, machine learning, statistics, and abstract mathematics. This programme equips you with the skills to analyse large datasets, extract meaningful insights, and make data-driven decisions. Career prospects include data scientist, business analyst, data engineer, and business intelligence analyst.

### Entry requirements:

- Applicant must hold at least 5 grades A – C at Ordinary Level, and 3 grades A – E at Advanced Level or equivalent

This should include Ordinary Level Mathematics grade C or equivalent

Mathematics at Advanced Level grade A-E or equivalent

- Pass the internal Admission Test and interview

### First year

Level 100 courses

- EC1002 Introduction to economics
- MT1173 Algebra and MT1174 Calculus
- OR
- MT1186 Mathematical methods
- AND
- MN1178 Business and management in a global context
- ST1215 Introduction to mathematical statistics

### Second year

Level 200 and 300 courses

- ST2195 Programming for data science
- OR
- IS2184 Information systems management
- ST2187 Business analytics,

applied modelling and prediction

- ST2133 Advanced statistics: distribution theory (half module)

AND

ST2134 Advanced statistics: statistical inference (half module)

- MT2116 Abstract Mathematics OR S2184 Information systems management

OR

EC2020 Elements of econometrics

### Third year

Level 6 modules

- ST3188 Statistical methods for market research
- ST3189 Machine learning
- One 300 course (or two half courses) from selection groups E, M or N
- One 100,200 or 300 course (or two half courses) from any selection group

#### Recommended optional courses

- IS3167 Management and innovation of e-business
- MT3095 Further mathematics for economists
- FN2191 Principles of corporate finance
- MT2176 Further calculus (half course) and MT2175 Further linear algebra (half course)

- EC2065 Macroeconomics
- EC2066 Microeconomics

Graduate entry route comprises 9 full courses (or equivalent)

### Job opportunities available globally

- Data scientist/Data engineer/Data analyst
- Artificial Intelligence application developer
- Algorithm specialist
- Big data engineer
- Machine learning scientist/Machine learning engineer
- Business intelligence developer
- Research scientist
- Security analyst

This list is non-exhaustive

## BSc Economics

The BSc Economics programme at RIC provides a deep dive into the world of economics and how it shapes our society. You'll study units such as Microeconomics, Macroeconomics, Econometrics, and International Economics. This programme prepares you for various roles in economics and related fields, including economist, financial analyst, policy analyst, and market researcher.

### Entry requirements:

- Applicant must hold at least 5 grades A – C at Ordinary Level, and 3 grades A – E at Advanced Level or equivalent  
This should include Ordinary Level Mathematics grade C or equivalent  
Mathematics at Advanced Level is recommended, but not compulsory
- Pass the internal Admission Test and interview

### First year

Level 100 courses

- EC1002 Introduction to economics
- ST1215 Introduction to mathematical statistics  
OR  
ST104a Statistics 1 (half course)  
AND  
ST104b Statistics 2 (half course)
- MT1186 Mathematical methods  
OR  
MT105A Mathematics 1  
AND  
MT105B Mathematics 2
- FN1202 Introduction to Finance

### Second year

Level 200 and 300 courses

- EC2020 Elements of econometrics

- EC2065 Macroeconomics
- EC2066 Microeconomics
- One 200 or 300 course from any selection group

### Third year

Level 200 and 300 courses

- EC3016 International economics
- EC3115 Monetary economics
- EC3120 Mathematical economics
- One 100, 200 or 300 course (or two half courses) from any selection group

### Recommended optional courses

- IS3167 Management and innovation of e-business
- FN2191 Principles of Corporate Finance
- FN3204 Investments & Portfolio Management
- ST2187 Business analytics, applied modelling and prediction
- DV3165 Development management
- IR3210 International political economy

Graduate entry route comprises 9 full courses (or equivalent)

### Job opportunities available globally

- Financial analyst
- Financial economist
- Economist
- Market research analyst
- Actuary
- Data analyst
- Investment analyst
- Economic researcher
- Policy analyst
- Credit analyst

This list is non-exhaustive

## BSc Accounting and Finance

The BSc Accounting and Finance programme offered through the EMFSS programme at RIC provides you with a comprehensive understanding of financial accounting, management accounting, and financial management. You'll study units such as Financial Reporting, Management Accounting, Corporate Finance, and Auditing. This programme prepares you for various career paths in accounting, finance, and business, including roles as financial analysts, auditors, management accountants, and financial managers.

### Entry requirements:

- Applicant must hold at least 5 grades A – C at Ordinary Level, and 3 grades A – E at Advanced Level or equivalent  
This should include Ordinary Level Mathematics grade C or equivalent
- Pass the internal Admission Test and interview

### First year

Level 100 courses

- EC1002 Introduction to economics
- ST104a Statistics 1 (half course) and MT105a Mathematics 1 (half course)
- FN1202 Introduction to Finance
- AC1025 Principles of accounting

### Second year

Level 200 and 300 courses

- EC2066 Microeconomics
- AC2091 Financial reporting
- AC2097 Management accounting
- AC3059 Financial management  
OR  
FN2203 Principles of Asset Pricing

## Third year

### Level 6 modules

- AC3093 Auditing and assurance
- AC3193 Accounting: markets and organisations
- One 200 or 300 course (or two half courses) from any selection group
- One 100,200 or 300 course (or two half courses) from any selection group

### Recommended optional courses

- IS3183 Management and social media
- IS3167 Management and innovation of e-business
- DV3165 Development management
- ST3188 Statistical methods for market research
- IS2184 Information systems management
- AC2091 Financial reporting
- AC2097 Management accounting

Graduate entry route comprises 9 full courses (or equivalent)

## Job opportunities available globally

- Accountant
- Investment advisor
- Finance technology developer
- Financial analyst/Financial economist/Financial risk analyst
- Business developer
- Market research analyst

This list is non-exhaustive

## BSc Economics and Management

The BSc Economics and Management programme at RIC offers a powerful combination of economic understanding and effective organisational management. You'll study units such as Microeconomics, Macroeconomics, Social Media Management, and Management Accounting, preparing you for roles such as management consultant, business analyst, operations manager, and entrepreneur. With this degree, graduates are well-equipped to excel in various industries, from finance and consulting to marketing and entrepreneurship.

### Entry requirements:

- Applicant must hold at least 5 grades A – C at Ordinary Level, and 3 grades A – E at Advanced Level or equivalent  
This should include Ordinary Level Mathematics grade C or equivalent
- Pass the internal Admission Test and interview

### First year

#### Level 100 courses

- EC1002 Introduction to economics
- ST104a Statistics 1 (half course) and MT105a Mathematics 1 (half course)
- AC1025 Principles of accounting
- MN1178 Business and management in a global context

### Second year

#### Level 200 and 300 courses

- MN2177 Core management concepts
- EC2066 Microeconomics
- EC2065 Macroeconomics

- FN2191 Principles of corporate finance  
OR  
AC3059 Financial management  
OR  
MN2032 Management science methods

### Third year

#### Level 200 and 300 courses

- One 300 course from Selection group E
- One 300 course from Selection group M
- One 200 or 300 course from Selection groups E or M
- One 100, 200 or 300 course from any Selection group

### Recommended optional courses

- AC2097 Management accounting
- DV3165 Development management
- AC2091 Financial reporting
- MN3141 Marketing management
- MN2032 Management science methods
- ST2187 Business analytics, applied modelling and prediction
- MN3194 Entrepreneurship
- ST3188 Statistical methods for market research

Graduate entry route comprises 9 full courses (or equivalent)

## Job opportunities available globally

- Market research analyst
- Data analyst
- Investment analyst
- Economic researcher
- Digital business analyst/Digital transformation analyst/
- Consumer insight analyst
- Business developer/Management and consultancy
- Corporate sector

This list is non-exhaustive

## BSc Economics and Politics

The BSc Economics and Politics programme at RIC offers a comprehensive understanding of economic principles and political systems. You'll study units such as Microeconomics, Macroeconomics, Monetary Economics, and International Political Economy, gaining insights into the intersection of economic policies and political decisions. Career prospects include roles such as policy analyst, political consultant, economic researcher, and government adviser, preparing graduates for impactful careers in government, international organisations, think tanks, and academia.

### Entry requirements:

- Applicant must hold at least 5 grades A – C at Ordinary Level, and 3 grades A – E at Advanced Level or equivalent  
This should include Ordinary Level Mathematics grade C or equivalent
- Pass the internal Admission Test and interview

### First year

Level 100 courses

- EC1002 Introduction to economics
- ST104a Statistics 1 AND MT105a Mathematics 1
- PS1130 Introduction to international political thought
- PS1172 Introduction to political science

### Second year

Level 200 and 300 courses

- EC2065 Macroeconomics
- EC2066 Microeconomics
- PS2082 Comparative politics
- One 200 or 300 course (or two half courses) from any selection group

### Third year

Level 200 and 300 courses

- EC3016 International economics OR EC3115 Monetary Economics
- PS3086 Democracy and democratisation
- One 300 course from selection group E
- One 300 course from selection group IR or P

#### Recommended optional courses

- IR3210 International political economy
- DV3162 Complex emergencies and humanitarian responses
- DV2192 Poverty and development
- DV3166 Global environmental problems and politics

Graduate entry route comprises 9 full courses (or equivalent)

### Job opportunities available globally

- Policy Analyst
- Economic Analyst
- Political Consultant
- Development Adviser
- Public Relations Specialist
- Public Policy Specialist
- Business Analyst
- Economist
- Government Relations Specialist

This list is non-exhaustive

## BSc International Relations

The BSc International Relations programme at RIC offers a comprehensive understanding of global politics and international relations. You'll study units such as International Political Thought, International Development, Social Psychology, and Foreign Policy Analysis, gaining insights into the complexities of international affairs. Career prospects include roles such as diplomat, policy analyst, and humanitarian aid worker, preparing graduates for impactful careers in government, non-profit organisations, and diplomacy.

### Entry requirements:

- Applicant must hold at least 5 grades A – C at Ordinary Level, and 3 grades A – E at Advanced Level or equivalent
- This should include Ordinary Level Mathematics grade C or equivalent
- Pass the internal Admission Test and interview

### First year

Level 100 courses

- IR1198 International relations; theories, concepts and debates
- PS1130 Introduction to international political thought
- Two 100 courses (or two half courses) from selection group F1

### Second year

Level 200 and 300 courses

- IR3210 International political economy
- IR2209 International political theory
- IR2213 International organisations
- One course from selection groups E, IR or P



### Third year

#### Level 200 and 300 courses

- IR2214 Foreign policy analysis
- IR3140 Security in international relations
- One 100, 200 or 300 course (or two half courses) chosen from any Selection group
- One 300 course from selection group IR or P

#### Recommended optional courses

- DV1171 Introduction to international development
- SC1179 Contemporary sociology in a global age
- DV3165 Development management
- DV3162 Complex emergencies and humanitarian responses
- DV3166 Global environmental problems and politics
- DV2192 Poverty and development
- SP2079 Elements of applied and social psychology

Graduate entry route comprises 9 full courses (or equivalent)

### Job opportunities available globally

- Diplomatic Corps/Foreign Services
- United Nations (UN) agencies involved in development and Peace-building
- Research institutes
- Foreign service
- Non governmental organisations
- Civil Society Organisations

This list is non-exhaustive

## BSc Management and Digital Innovation

The BSc Management and Digital Innovation programme at RIC offers a comprehensive understanding of management principles and digital technologies. You'll study units such as Core Management Concepts, Digital Infrastructure, Information Systems Management, and E-business, gaining skills to lead and innovate in the digital age.

Career prospects include roles such as digital marketing manager, innovation consultant, project manager, and business analyst, preparing graduates for dynamic careers in industries such as technology, marketing, and consulting.

### Entry requirements:

- Applicant must hold at least 5 grades A – C at Ordinary Level, and 3 grades A – E at Advanced Level or equivalent
- This should include Ordinary Level Mathematics grade C or equivalent
- Pass the internal Admission Test and interview

### First year

#### Level 100 courses

- IS1060 Introduction to information systems
- MN1178 Business and management in a global context
- IS1181 Digital infrastructures for business
- One of the following courses
  - MT105a Mathematics 1 (half course) and ST104a Statistics 1 (half course)
  - OR
  - AC1025 Principles of accounting
  - OR
  - SC1179 Contemporary sociology in a global age

### Second year

#### Level 200 and 300 courses

- MN2177 Core management concepts
- IS2184 Information systems management
- MN3194 Entrepreneurship
- OR
- MN2032 Management science methods
- OR
- ST2195 Programming for data science
- OR
- AC2091 Financial Reporting
- IS3183 Management and social media

### Third year

#### Level 200 and 300 courses

- IS3159 Research project in digital innovation
- IS3167 Management and innovation of e-business
- One 300 course from selection group M
- One 100, 200 or 300 course (or two half courses) chosen from any selection group

#### Recommended optional courses

- MN3141 Marketing management
- ST3188 Statistical methods for market research
- ST2195 Programming for data science
- AC3059 Financial management
- AC2097 Management accounting

Graduate entry route comprises 9 full courses (or equivalent)

### Job opportunities available globally

- Digital marketing and social media strategist
- Digital business analyst/Digital transformation analyst/Consumer insight analyst
- Business developer/Management and consultancy
- E-commerce (Web development/Web administration/Web designer)
- Market research analyst

This list is non-exhaustive

## BSc Mathematics and Economics

The BSc Mathematics and Economics programme at RIC blends mathematical rigour with economic theory, preparing students for analytical roles in various industries. You'll study units like Mathematical Statistics, Microeconomics, Macroeconomics, and Abstract Mathematics, gaining essential quantitative and analytical skills.

### Entry requirements:

- Applicant must hold at least 5 grades A – C at Ordinary Level, and 3 grades A – E at Advanced Level or equivalent.  
This should include Ordinary Level Mathematics grade C or equivalent
- Advanced Level Mathematics required
- Pass the internal Admission Test and interview

### First year

Level 100 courses

- EC1002 Introduction to economics
- MT1173 Algebra
- MT1174 Calculus
- ST1215 Introduction to mathematical statistics  
OR  
ST104a Statistics 1 (half course)  
AND ST104b Statistics 2 (half course)

### Second year

Level 200 and 300 courses

- EC2066 Microeconomics
- EC2065 Macroeconomics
- MT2116 Abstract Mathematics
- MT2176 Further calculus (half course)  
AND  
MT2175 Further linear algebra (half course)

### Third year

Level 200 and 300 courses

- EC2020 Elements of econometrics  
OR  
EC3016 International economics  
OR  
EC3115 Monetary economics  
OR  
EC3120 Mathematical economics
- One 300 course (or two half courses from selection group N)
- One 300 course from selection group E
- One 200 or 300 course (or two half courses from Selection groups E or N)

### Recommended optional courses

- ST2133 Advanced statistics: distribution theory (half course) and ST2134 Advanced statistics: statistical inference (half course)
- MT3095 Further mathematics for economists
- IR3026 International political economy
- ST2195 Programming for data science
- ST3189 Machine learning
- ST2187 Business analytics, applied modelling and prediction

### Job opportunities available globally

- Data scientist/Data engineer/Data analyst
- Artificial Intelligence application developer
- Algorithm specialist
- Big data engineer
- Machine learning scientist/Machine learning engineer
- Business intelligence developer
- Research scientist
- Security analyst

This list is non-exhaustive

## BSc Politics and International Relations

The BSc Politics and International Relations programme at RIC delves into global political systems and international dynamics. You'll study units such as International Relations Theory, Comparative Politics, Poverty and Development, Foreign Policy Analysis, and Democracy. This programme prepares you for careers as policy analysts, diplomats, international consultants, and political advisers, equipping graduates for impactful roles in government, NGOs, international organisations, and academia.

### Entry requirements:

- Applicant must hold at least 5 grades A – C at Ordinary Level, and 3 grades A – E at Advanced Level or equivalent.  
This should include Ordinary Level Mathematics grade C or equivalent
- Pass the internal Admission Test and interview

### First year

Level 100 courses

- IR1198 International relations: theories, concepts and debates
- PS1130 Introduction to international political thought  
OR  
PS1172 Introduction to political science.
- Two 100 courses (or two half courses) from selection group F1

### Second year

Level 200 and 300 courses

- PS2082 Comparative politics
- IR2209 International political theory
- IR2085 International organisations

OR

IR2214 Foreign policy analysis

- PS3086 Democracy and democratisation

### Third year

Level 200 and 300 courses

- TWO 300 courses from Selection groups E, IR or P
- One course from Selection groups E, IR or P
- One 100, 200 or 300 course (or two half courses) chosen from any Selection group

#### Recommended optional courses

- IR3210 International political economy
- DV3162 Complex emergencies and humanitarian responses
- DV2192 Poverty and development
- DV3166 Global environmental problems and politics
- IR3140 Security in international relations
- DV3165 Development management

Graduate entry route comprises 9 full courses (or equivalent)

### Job opportunities available globally

- Policy Analyst
- Political Consultant
- Human Rights Advocate
- Public Relations Specialist
- International Relations Specialist
- Development Adviser
- Government Relations Specialist
- Diplomat

This list is non-exhaustive



*“The University of London’s EMFSS programme at Royal Institute of Colombo has been an amazing and recalibrating journey. The diverse range of programmes ensures that students receive a well-rounded education, preparing them for success in their chosen fields. The practical experience integrated into the curriculum has deepened my understanding of economics and financial concepts which are relevant to my degree. The lecturers who are known for being engaging during lectures and are passionate about the subjects they teach, have been of significant help in guiding me through challenging topics. Overall, the Royal Institute of Colombo fosters a supportive and inclusive atmosphere where students can thrive academically and personally”*

**Riveen Ferdinando**  
EMFSS Programmes

# Course Selection Groups

## Level 100 courses

### Selection group F1

- AC1025 Principles of accounting
- DV1171 Introduction to international development
- EC1002 Introduction to economics
- FN1202 Introduction to finance
- IR1198 International Relations: Theories, Concepts and Debates
- IS1060 Introduction to information systems
- IS1181 Digital infrastructures for business
- MN1178 Business and management in a global context
- MT105A Mathematics 1 (half course)
- MT105B Mathematics 2 (half course)
- MT1173 Algebra
- MT1174 Calculus
- MT1186 Mathematical methods
- PS1130 Introduction to international political thought
- PS1172 Introduction to political science
- SC1179 Contemporary sociology in a global age
- ST104A Statistics 1 (half course)
- ST104B Statistics 2 (half course)
- ST1215 Introduction to Mathematical Statistics

## Level 200 and 300 courses

### Selection group AB

- AC2091 Financial reporting
- AC2097 Management accounting
- AC3059 Financial management or FN2203 Principles of Asset Pricing
- AC3093 Auditing and assurance
- AC3193 Accounting: markets and organisations
- FN2191 Principles of corporate finance
- FN2029 Financial intermediation
- FN3142 Quantitative finance
- FN3204 Investments & Portfolio Management

### Selection group D

- DV2192 Poverty and development

- DV3162 Complex emergencies and humanitarian responses
- DV3165 Development management
- DV3166 Global environmental problems and politics
- EC3016 International economics

### Selection group E

- EC2020 Elements of econometrics
- EC2065 Macroeconomics
- EC2066 Microeconomics
- EC3016 International economics
- EC3115 Monetary economics
- EC3120 Mathematical economics
- FN2203 Principles of Asset Pricing
- FN2191 Principles of corporate finance
- IR3210 International political economy
- MT3095 Further mathematics for economists

### Selection group IR

- DV2192 Poverty and development
- DV3162 Complex emergencies and humanitarian responses
- DV3165 Development management
- DV3166 Global environmental problems and politics
- IR2085 International organisations
- IR2214 Foreign policy analysis
- IR3210 International political economy
- IR2209 International political theory
- IR3140 Security in international relations

### Selection group IS

- IS2184 Information systems management
- IS3159 Research project in digital innovation
- IS3167 Management and innovation of e-business
- IS3183 Management and social media

### Selection group N

- MT2116 Abstract mathematics

- MT2175 Further linear algebra (half course)
- MT2176 Further calculus (half course)
- ST2133 Advanced statistics: distribution theory (half course)
- ST2134 Advanced statistics: statistical inference (half course)
- ST2187 Business analytics, applied modelling and prediction
- ST2195 Programming for data science
- ST3188 Statistical methods for market research
- ST3189 Machine learning

### Selection group M

- AC3059 Financial management OR FN2203 Principles of Asset Pricing
- AC2097 Management accounting
- DV3165 Development management
- FN2191 Principles of corporate finance
- IS2184 Information systems management
- IS3167 Management and innovation of e-business
- IS3183 Management and social media
- MN2177 Core management concepts
- MN2032 Management science methods
- MN3141 Marketing management
- MN3194 Entrepreneurship
- SP2079 Elements of social and applied psychology
- ST3188 Statistical methods for market research

### Selection group P

- DV2192 Poverty and development
- DV3162 Complex emergencies and humanitarian responses
- DV3165 Development management
- DV3166 Global environmental problems and politics
- PS2082 Comparative politics
- PS3086 Democracy and democratisation

# LSE Summer School

Are you aware of our exciting study abroad programme tailored specifically for EMFSS students? Every year, three outstanding students from the EMFSS programme are selected for the unique opportunity to study at the prestigious London School of Economics and Political Science (LSE) during their summer school session. This exclusive programme offers selected EMFSS students an unparalleled opportunity to immerse themselves in the academic excellence and vibrant culture of LSE, one of the world's leading institutions for social sciences and economics. Through our merit-based scholarship, tuition fees for the LSE summer school are fully covered for the selected students, significantly reducing the financial burden associated with studying abroad. Additionally, students are responsible only for their living expenses and airfare, allowing them to focus on making the most of their academic and cultural experience in London. LSE Summer School offers a wide

range of courses across disciplines such as economics, finance, management, sociology, and political science, providing students with the flexibility to explore their academic interests and expand their knowledge base. Beyond the classroom, students have access to a wealth of resources, including libraries, research centres, and extracurricular activities, enriching their overall learning experience. Studying at LSE Summer School not only provides academic enrichment but also offers a unique opportunity for cultural immersion in one of the world's most dynamic cities. London's rich history, diverse communities, and vibrant arts scene provide a stimulating backdrop for exploration and discovery.



“Attending the LSE Summer School was a transformative experience that exceeded all my expectations. The rigorous academic programmes, diverse international community, and vibrant campus atmosphere provided me with valuable insights and unforgettable memories!”

**Faiiq Kamaldeen**  
BSc Management and Digital Innovation



“The LSE Summer School was an amazing opportunity to dive deeper into areas and concepts of our interests. We got to do so with some of the best and brightest from around the world, guided by LSE's leading academics and knowledge resources.”

**Joshua Thananayagam**  
BSc Economics and Management



“The LSE Summer School has been amazing with an authentic teaching system that is unique and focused on the application of concepts that we learn. My summer school experience has been mind blowing and I will forever cherish the memories and lifelong friendships I have made.”

**Janisha Katuwapitiya**  
BSc Economics and Management



**THE BOOK IS JUST ONE PART OF THIS LEARNING SYSTEM.**

Getting the best learning materials, you will not experience that you are using advantage in the classroom from within (20-20%) to existing technology unless you will have something you need to enhance your understanding of major concepts, gain the skills you are gaining for reading and writing that relates to real-world situations.

**Get the best book advantage!**

**For the Student (20-20%)** - Access all your content for education and your content in a digital format that is easy to use and can be used in a variety of ways. The book is just one part of the learning system. You can use the book in a variety of ways, including as a reference, a study guide, or a source of information. You can also use the book as a source of information for your research and writing.

**Student & Parent's Educational Success at Higher Level!**

Students and parents can use the book in a variety of ways, including as a reference, a study guide, or a source of information. You can also use the book as a source of information for your research and writing.

**The Student Learning Center - [www.stlcs.com](http://www.stlcs.com)**

Books are available in a variety of formats, including print, digital, and audio. You can also use the book as a source of information for your research and writing.

# Psychology Programme

## University of London

Awarding Body



**UNIVERSITY  
OF LONDON**

Academic Direction



Unleash your fascination with the human mind with the Royal Institute of Colombo's BSc Psychology programme. This prestigious degree is awarded by the University of London, a globally recognised institution. The programme is academically directed by King's College London, a world leader in psychology, research, and education. This unique collaboration brings you the best of both worlds: a respected degree and access to a world-class curriculum informed by cutting-edge research. Dive deep into core psychology areas like cognition, social interaction, human development, and biological basis of behaviour.

With our flexible entry requirements, you can start your journey after O-Levels through the performance entry route. Alternatively, you can enroll in the University of London foundation course, or if you have completed your A-Levels, directly enter the degree programme.

### Psychology programmes

BSc Psychology

Please scan the QR  
code for frequently  
asked questions



## BSc Psychology

The BSc Psychology programme at RIC explores the scientific study of the mind and behaviour. You'll study units such as Cognitive Psychology, Developmental Psychology, Biological Psychology, and Gender and Mental Health. This programme equips you with critical thinking and research skills, preparing you for careers as clinical psychologists, counsellors, human resource specialists, and market researchers. Graduates are well-prepared for impactful roles in healthcare, education, business, and research.

### Entry requirements:

#### Route 1 - Direct / Standard entry:

Applicant must :

- Hold at least 3 grades A-D at Advanced level or equivalent and one of these must be obtained in Mathematics, Psychology, or Biology
- Ordinary level Mathematics, grade A-C or equivalent
- Pass the internal Admission Test and interview

#### Route 2 - Performance based entry:

Applicant must :

- Hold at least 6 grades A – D at Ordinary Level or equivalent and one of these must be obtained in Mathematics, at grade A – C or equivalent
- To be admitted onto the full BSc programme, must pass two required modules with an overall result of 40% or above, with at least 40% in each element of assessment
- Pass the internal Admission Test and interview

#### Route 3 - Via International Foundation Programme (IFP)

(For more details, refer page 30)

Applicant must :

- Complete the IFP
- One of the courses taken as part of the IFP should be Mathematics and Statistics [FP0001], which should be passed with a mark of at least 60%

#### Eight 15-credit modules at FHEQ level 4

- Research Design and Statistics 1A
- Research Design and Statistics 1B
- Applications of Psychology
- Developmental Psychology
- Learning, Personality and Intelligence
- Biological Psychology
- Social Psychology
- Research Skills 1: Qualitative Skills

#### Eight 15-credit modules at FHEQ level 5

- Research Skills 2: Literature Skills
- Cognitive Psychology
- Understanding Individual Differences
- Research Design and Statistics 2A: Analysis of Variance
- Health and Addictive Behaviours
- Research Design and Statistics 2B: Multivariate Measures
- Philosophy of Psychology
- Clinical Psychology

#### Six 15-credit modules at FHEQ Level 6 + One 30-credit research project

- Current Issues in Neuroscience
- Gender and Mental Health
- Mental Health around the World
- Occupational Psychology
- Forensic Psychology
- Research Project 1: Foundation
- Research Project 2: Consolidation

### Job opportunities available globally

Those who wish to pursue their careers as a registered Psychologist, can opt for an M.Phil. / Psy.D. / Ph.D. in Psychology/ Philosophy and fulfill their minimum clinical hours under supervision to qualify as a registered Psychologist in Sri Lanka.

Upon completion of the undergraduate degree, students can also follow further training to specialise in various forms of therapy and counselling (Cognitive Behavioural Therapy/ Psychodynamic therapy/ Conversational Model of Therapy) and become psychotherapists.

- Academic Setting
  - Lecturer
  - Teacher/ Psychology Teacher
  - Career Guidance Counsellor
  - Counsellor
  - Educational Psychologist
  - Education Administrator
  - Special Education Teacher
- Industrial Setting
  - Industrial Psychologist
  - Organisational Psychologist
  - Counsellor
  - Administrator
  - Employment Recruiter
  - Human Resources Adviser
  - Human Resources Manager
- Hospital Setting
  - Counselling Psychologist
  - Clinical Psychologist
  - Cognitive Neuroscientist
  - Health Psychologist
  - Child Psychologist
  - Child Care Worker
  - Mental Health Coordinator
- Law and Enforcement
  - Child Care Worker
  - Social Worker
  - Community Counsellor
  - Forensic Psychologist



- Crisis Counsellor
- Marriage Counsellor
- Family and Marriage Therapist
- Rehabilitation Counselor
- Other
  - Neuro-psychologist
  - Psycho-educational consultant
  - Social Worker
  - Researcher
  - Mental Health Advocate
  - Recreational Therapist
  - Social Psychologist

This list is non-exhaustive



*“The University of London’s BSc Psychology programme at the Royal Institute of Colombo has profoundly impacted my academic journey and has been immensely rewarding. The course is exceptionally well-structured, providing a comprehensive understanding of the diverse facets of psychology. The lecturers are remarkable. They are knowledgeable, approachable, and always ready to offer additional support, making complex psychological concepts clear and learning enjoyable. One of the standout features of the programme has been the field visits. These visits have been invaluable in bridging the gap between theoretical knowledge and practical application. Overall, I am assured that the BSc Psychology programme as a whole will adequately equip me with the knowledge required to succeed in the field of psychology”*

**Heshini Abeyesundere**  
Psychology Programme



# Science Pathway Programmes

Deakin University



CRICOS Provider Code: 00113B

The Science Pathway Programmes at RIC provide a dynamic foundation in various scientific disciplines, allowing students to begin their academic journey here and transfer to Deakin University in Australia for degree completion. Through hands-on laboratory work, field studies, and collaborative projects, students gain practical experience and technical expertise. Upon completing the initial phase at RIC, students will transfer to Deakin University, gaining access to world-class facilities, a diverse academic community, and global career opportunities.

## Science pathway programmes

Bachelor of Biomedical Science

Bachelor of Environmental Science

Bachelor of Forensic Science

Bachelor of Science

Bachelor of Zoology and Animal Science



Deakin University is ranked among the top 1% of universities Worldwide\*

\*ARWU Rankings 2023

Please scan the QR code for frequently asked questions



## Bachelor of Biomedical Science

The Bachelor of Biomedical Science programme offers a comprehensive study of biology and medicine, including genetics, pharmaceutical sciences, microbiology, and pathology, alongside practical lab skills. Graduates embark on careers as biomedical researchers, clinical scientists, or biotech specialists, driving innovation and research advancements across diverse healthcare sectors.

### Entry requirements:

- Applicant must hold at least 7 points\* (from a minimum of 2 and a maximum of 3 A/L subjects) at Advanced Level (National) or 6 points\* (from a minimum of 2 and a maximum of 3 A/L subjects) at Advanced Level (London) in the science stream. Students who do not meet this requirement, refer page 28

\*To calculate A/L (UK) points: A\*/A=5, B=4, C=3, D=2, E=1

\*To calculate A/L (National) points: A=5, B=4, C=3, S=2

### First year

Compulsory modules conducted by RIC

- SLE115 Essential Skills in Bio-Science
- SLE111 Cells and Genes
- SIT191 Introduction to Statistics and Data Analysis
- SLE155 Chemistry for the professional Sciences
- SLE103 Ecology and the Environment
- SLE123 Physics for the Life Sciences
- SLE132 Biology: Form and Function
- SLE133 Chemistry in Our World

Second and third year modules will be conducted at Deakin

University, Australia (After successfully completing the first year modules\*\*)

Available Major Specialisations to choose from, in the second and third years at Deakin University, Australia :

- Molecular Life Science
- Medical Biotechnology
- Medical Genomics
- Environment health
- Pharmaceutical Science
- Infection and Immunity Science

### Job opportunities available globally

- Analytical Chemist
- Biomedical Scientist
- Biotechnologist
- Clinical Scientist
- Genetic Counsellor
- Medical Chemist
- Microbiologist
- Physician Associate
- Medical Research Scientist
- Toxicologist
- Medical Laboratory Scientist
- Clinical Trials Associate
- Healthcare Scientist

This list is non-exhaustive

\*\* Subject to the conditions of achieving a satisfactory overall weighted average mark (as decided by the Faculty) for the units completed at RIC, meeting the relevant English Language requirement and student visa requirements. For more information on Deakin admission criteria, please refer to the Deakin international course guide.

## Bachelor of Environmental Science

The Bachelor of Environmental Science programme explores the relationships between ecosystems, society, and policy. Courses include Environmental Chemistry, Conservation Biology, Climate Change Policy, Marine Science, and Sustainable Resource Management. Graduates are prepared for careers in environmental consulting, conservation science, urban planning, and policy advising, contributing to government, non-profits, and businesses.

### Entry requirements:

- Applicant must hold at least 7 points\* (from a minimum of 2 and a maximum of 3 A/L subjects) at Advanced Level (National) or 6 points\* (from a minimum of 2 and a maximum of 3 A/L subjects) at Advanced Level (London) in the science stream. Students who do not meet this requirement, refer page 28

\*To calculate A/L (UK) points: A\*/A=5, B=4, C=3, D=2, E=1

\*To calculate A/L (Sri Lanka) points: A=5, B=4, C=3, S=2

### First year

Compulsory modules conducted by RIC

- SLE115 Essential skills in Bio-Science
- SLE111 Cells and Genes
- SLE133 Chemistry in Our World
- SLE101 Environmental Techniques and Monitoring
- SLE102 Physical Geography
- SLE121 Environmental Sustainability
- SLE103 Ecology and the Environment
- SLE128 Oceans, Coasts and Climate Change

Second and third year modules will be conducted at Deakin University, Australia (After successfully completing the first year modules\*\*)

Available courses to choose from, in the second and third years at Deakin University, Australia :

- Bachelor of Environmental Science and Sustainability
- Bachelor of Environmental Science (Wildlife and Conservation Biology)
- Bachelor of Marine Science. This has two majors:
  - Ocean, Fisheries and Aquaculture Sciences
  - Sustainable Marine Management

### Job opportunities available globally

- Amenity horticulturist
- Commercial horticulturist
- Environmental consultant
- Environmental educational officer
- Environmental manager
- Genetic counsellor
- Marine Biologist
- Nature conservation officer
- Park ranger
- Recycling officer
- Sustainability consultant
- Wildlife Officer
- Ecologist
- Environmental Policy Analyst
- Environmental Health Officer

This list is non-exhaustive

\*\*Subject to the conditions of achieving a satisfactory overall weighted average mark (as decided by the Faculty) for the units completed at RIC, meeting the relevant English Language requirement and student visa requirements. For more information on Deakin admission criteria, please refer to the Deakin international course guide.

## Bachelor of Forensic Science

The Bachelor of Forensic Science programme immerses students in the captivating realm of criminal investigation and scientific scrutiny. With a curriculum featuring pivotal courses such as Forensic Biology, Crime Scene Investigation, Forensic Data Analysis, and Forensic Chemistry, students acquire hands-on expertise in evidence gathering and evaluation. Graduates emerge prepared for a spectrum of professions including forensic analyst, crime scene investigator, and laboratory technician, poised to play vital roles in law enforcement agencies, government entities, and forensic laboratories.

### Entry requirements:

- Applicant must hold at least 7 points\* (from a minimum of 2 and a maximum of 3 A/L subjects) at Advanced Level (National) or 6 points\* (from a minimum of 2 and a maximum of 3 A/L subjects) at Advanced Level (London) in the science stream. Students who do not meet this requirement, refer page 28
  - \*To calculate A/L (UK) points: A=5, B=4, C=3, D=2, E=1
  - \*To calculate A/L (Sri Lanka) points: A=5, B=4, C=3, S=2

### First year

Compulsory modules conducted by RIC

- SLE115 Essential skills in bioscience
- SLE111 Cells and genes
- SLE133 Chemistry in our world
- SIT191 Introduction to statistics and data analysis
- SLE123 Physics for the life sciences
- SLE155 Chemistry for the professional sciences

- SLE103 Ecology and the environment
- SLE132 Biology: Form and function

Second and third year modules will be conducted at Deakin University, Australia (After successfully completing the first year modules\*\*)

Available Major Specialisations to choose from, in the second and third years at Deakin University, Australia :

- Forensic biology
- Forensic chemistry

### Job opportunities available globally

- Forensic Scientist
- Forensic DNA Analyst
- Forensic Pathologist
- Crime Laboratory Technician
- Laboratory Technician in Forensic Science
- Analytical chemist
- Crime scene investigator
- Detective
- Forensic toxicologist
- Insurance Investigator

This list is non-exhaustive

\*\*Subject to the conditions of achieving a satisfactory overall weighted average mark (as decided by the Faculty) for the units completed at RIC, meeting the relevant English Language requirement and student visa requirements. For more information on Deakin admission criteria, please refer to the Deakin international course guide.

## Bachelor of Science

The Bachelor of Science programme presents a comprehensive journey through the natural sciences, encompassing biology, chemistry, physics, geography, and mathematics. Students dive deep into fundamental principles and methodologies, blending hands-on laboratory work with theoretical study to cultivate critical thinking and analytical prowess. Equipped with this versatile skill set, graduates embark on diverse career paths in research, education, healthcare, environmental science, and technology, poised to make significant contributions to society's understanding and progress in the realm of science.

### Entry requirements:

- Applicant must hold at least 7 points\* (from a minimum of 2 and a maximum of 3 A/L subjects) at Advanced Level (National) or 6 points\* (from a minimum of 2 and a maximum of 3 A/L subjects) at Advanced Level (London) in the science stream. Students who do not meet this requirement, refer page 28

\*To calculate A/L (UK) points: A\*/A=5, B=4, C=3, D=2, E=1

\*To calculate A/L (Sri Lanka) points: A=5, B=4, C=3, S=2

### First year

Compulsory modules conducted by RIC

- SLE115 Essential skills in bioscience
- SLE111 Cells and genes
- SLE133 Chemistry in our world
- SIT191 Introduction to statistics and data analysis
- SLE123 Physics for the life sciences
- SLE155 Chemistry for the professional sciences

- SLE103 Ecology and the environment
- SLE132 Biology: Form and function

Second and third year modules will be conducted at Deakin University, Australia (After successfully completing the first year modules\*\*)

Available Major Specialisations to choose from, in the second and third years at Deakin University, Australia :

- Animal biology
- Cell biology
- Chemistry
- Chemistry and material science
- Environmental science
- Genomics
- Geography
- Human biology
- Mathematical modelling
- Plant biology

### Job opportunities available globally

- Computational Biologist
- Analytical Chemist
- Process Chemist
- Molecular Biologist
- Geographic Researcher
- Bioinformatics Specialist
- Clinical Scientist
- Laboratory Scientist
- Occupational Health and Safety Officer
- Quality Assurance Officer

This list is non-exhaustive

\*\*Subject to the conditions of achieving a satisfactory overall weighted average mark (as decided by the Faculty) for the units completed at RIC, meeting the relevant English Language requirement and student visa requirements. For more information on Deakin admission criteria, please refer to the Deakin international course guide.

## Bachelor of Zoology and Animal Science

The Bachelor of Zoology and Animal Science programme at RIC immerses students in the intricate realms of animal biology, behaviour, and conservation. Through rigorous coursework in animal physiology, ecology, genetics, and wildlife management, graduates acquire a comprehensive understanding of the natural world. Equipped with versatile skills, they embark on diverse career paths as wildlife biologists, zookeepers, veterinary assistants, and conservation officers. This programme cultivates leaders in research, environmental advocacy, and animal welfare, championing the preservation and appreciation of Earth's rich biodiversity.

### Entry requirements:

- Applicant must hold at least 7 points\* (from a minimum of 2 and a maximum of 3 A/L subjects) at Advanced Level (National) or 6 points\* (from a minimum of 2 and a maximum of 3 A/L subjects) at Advanced Level (London) in the science stream. Students who do not meet this requirement, refer page 28

\*To calculate A/L (UK) points: A\*/A=5, B=4, C=3, D=2, E=1

\*To calculate A/L (Sri Lanka) points: A=5, B=4, C=3, S=2

### First year

Compulsory modules conducted by RIC

- SLE115 Essential skills in bioscience
- SLE111 Cells and genes
- SLE133 Chemistry in our world
- SIT191 Introduction to statistics and data analysis
- SLE123 Physics for the life sciences
- SLE155 Chemistry for the professional sciences

- SLE103 Ecology and the environment
- SLE132 Biology: Form and function

Second and third year modules will be conducted at Deakin University, Australia (After successfully completing the first year modules\*\*)

Available Minor Specialisations to choose from, in the second and third years at Deakin University, Australia :

- Applied data analytics
- Indigenous studies

### **Job opportunities available globally**

- Research Assistant
- Environmental Manager
- Pest Management Officer
- Collection Manager of aquaria and zoological gardens
- Primary and secondary teachers

This list is non-exhaustive

\*\*Subject to the conditions of achieving a satisfactory overall weighted average mark (as decided by the Faculty) for the units completed at RIC, meeting the relevant English Language requirement and student visa requirements. For more information on Deakin admission criteria, please refer to the Deakin international course guide.



*“The standout learning experiences in the Deakin pathway programmes at RIC have truly shaped my academic journey and future aspirations. The co-teaching experience and career guidance programme were instrumental in providing a clear direction for my future endeavors. Laboratory sessions and field visits allowed me to approach the theory lessons practically, enhancing my understanding and application of concepts. The lecturers and staff created a comfortable and supportive learning environment, demonstrating remarkable flexibility and dedication in addressing my concerns. Overall, my time at RIC was incredibly rewarding, and I am grateful for the enriching experiences that have prepared me for the future”*

**Dinethya Senojee Perera**  
Deakin Pathway Programme





# Engineering Pathway Programmes

Deakin University



CRICOS Provider Code: 00113B

The Engineering Pathway Programmes at RIC provide a robust foundation in various engineering disciplines, allowing students to begin their academic journey here and transfer to Deakin University in Australia for degree completion. Through hands-on laboratory work, field studies, and collaborative projects, students gain practical experience and technical expertise. Upon completing the initial phase at RIC, students will transfer to Deakin University, gaining access to world-class facilities, a diverse academic community, and global career opportunities.

## Engineering pathway programmes

Bachelor of Engineering (Honours) - Civil Engineering Major

Bachelor of Engineering (Honours) - Electrical and Renewable Energy Engineering Major

Bachelor of Engineering (Honours) - Environmental and Sustainability Engineering Major

Bachelor of Engineering (Honours) - Mechanical Engineering Major

Bachelor of Engineering (Honours) - Mechatronics Engineering Major

Please scan the QR code for frequently asked questions



## Bachelor of Engineering (Honours)-Civil Engineering Major

The Bachelor of Engineering (Honours) - Civil Engineering Major provides a thorough grounding in structural analysis, materials science, and environmental engineering. Students study units such as Structural Design, Mathematical Modelling, and Fluid Mechanics, gaining the skills to design and construct infrastructure projects. Career prospects include roles as civil engineers, project managers, and urban planners, preparing graduates for impactful careers in construction, urban development, and public infrastructure.

### Entry requirements:

- Applicant must hold at least 7 points\* (from a minimum of 2 and a maximum of 3 A/L subjects with at least S grade in Combined Mathematics) at Advanced Level (National) or 6 points\* (from a minimum of 2 and a maximum of 3 A/L subjects with at least E grade in Mathematics) at Advanced Level (London). Students who do not meet this requirement, refer page 28

\*To calculate A/L (UK) points: A\*/A=5, B=4, C=3, D=2, E=1

\*To calculate A/L (Sri Lanka) points: A=5, B=4, C=3, S=2

### First year

Compulsory modules conducted by RIC

- SEJ103 Materials Engineering Project
- SIT194 Introduction to Mathematical Modelling
- SEP105 Programming and Visualisation
- SET111 Sustainable Design
- SEJ104 Engineering in Society
- SEB101 Engineering Physics
- SIT199 Applied Algebra and Statistics

### Second year

Compulsory modules conducted by RIC

- SEJ202 Field Investigation
- SEM218 Fluid mechanics
- SEP291 Engineering modelling
- SEJ201 Structural design
- SEM216 Stress and Failure Analysis
- SEV254 Road and pavement engineering

Third and fourth year modules will be conducted at Deakin University, Australia (After successfully completing the modules in the first two years\*\*)

### Job opportunities available globally

- Building Control Surveyor
- Building Services Engineer
- Civil Engineer
- Design Engineer
- Hydraulics Engineer
- Research Assistant
- Structural Engineer
- Supply Chain Manager
- Sustainability consultant
- Transport and Logistics Engineer
- Urban Designer

This list is non-exhaustive

\*\*Subject to the conditions of achieving a satisfactory overall weighted average mark (as decided by the Faculty) for the units completed at RIC, meeting the relevant English Language requirement and student visa requirements. For more information on Deakin admission criteria, please refer to the Deakin international course guide.

## Bachelor of Engineering (Honours) - Electrical and Renewable Energy Engineering Major

The Bachelor of Engineering (Honours) - Electrical and Renewable Energy Engineering Major offers in-depth knowledge in circuit design, digital systems, and power electronics. Students study units like Power Engineering Design, Power Electronics, and Embedded System Design, developing skills for innovative technological solutions. Career prospects include roles as electrical engineers, systems designers, and telecommunications specialists, preparing graduates for impactful careers in technology development, energy sectors, and electronic manufacturing.

### Entry requirements:

- Applicant must hold at least 7 points\* (from a minimum of 2 and a maximum of 3 A/L subjects with at least S grade in Combined Mathematics) at Advanced Level (National) or 6 points\* (from a minimum of 2 and a maximum of 3 A/L subjects with at least E grade in Mathematics) at Advanced Level (London). Students who do not meet this requirement, refer page 28

\*To calculate A/L (UK) points: A\*/A=5, B=4, C=3, D=2, E=1

\*To calculate A/L (Sri Lanka) points: A=5, B=4, C=3, S=2

### First year

Compulsory modules conducted by RIC

- SEJ102 Electrical Systems Engineering Project
- SIT194 Introduction to Mathematical Modelling
- SEP105 Programming and Visualisation
- SET111 Sustainable Design
- SEJ104 Engineering In Society
- SEB101 Engineering Physics
- SIT199 Applied Algebra and Statistics

## Second year

Compulsory modules conducted by RIC

- SEE210 Power Engineering Design
- SEE216 Analogue and Digital Electronics
- SEP291 Engineering Modelling
- SEE222 Embedded System Design
- SEE213 Distributed Generated System Design
- SEE212 Power Electronics

Third and fourth year modules will be conducted at Deakin University, Australia (After successfully completing the modules in the first two years\*\*)

## Job opportunities available globally

- Acoustic Consultant
- Aerospace Engineer
- Broadcast Engineer
- Control and Instrumentation Engineer
- Electrical Engineer
- Electronic Engineer
- Machine Learning and AI Engineer
- Power System Planner/Engineer
- Renewable Technology Engineer
- Research Assistant
- Robotics Engineer
- Telecommunication Engineer

This list is non-exhaustive

\*\*Subject to the conditions of achieving a satisfactory overall weighted average mark (as decided by the Faculty) for the units completed at RIC, meeting the relevant English Language requirement and student visa requirements. For more information on Deakin admission criteria, please refer to the Deakin international course guide.

## Bachelor of Engineering (Honours) - Environmental and Sustainability Engineering Major

The Bachelor of Engineering (Honours) – Environmental and Sustainability Engineering Major provides a comprehensive understanding of sustainable engineering practices and environmental management. Students study units like Sustainable Design, Field Investigation, and Geographic Information Systems, while developing skills to address environmental challenges. Career prospects include roles as environmental engineers, sustainability consultants, and water resource managers, preparing graduates for impactful careers in environmental protection, resource management, and sustainable development.

### Entry requirements:

- Applicant must hold at least 7 points\* (from a minimum of 2 and a maximum of 3 A/L subjects with at least S grade in Combined Mathematics) at Advanced Level (National) or 6 points\* (from a minimum of 2 and a maximum of 3 A/L subjects with at least E grade in Mathematics) at Advanced Level (London). Students who do not meet this requirement, refer page 28

\*To calculate A/L (UK) points: A=5, B=4, C=3, D=2, E=1

\*To calculate A/L (Sri Lanka) points: A=5, B=4, C=3, S=2

### First year

Compulsory modules conducted by RIC

- SEJ104 Engineering in Society
- SET111 Sustainable Design
- SEB101 Engineering Physics
- SIT199 Applied Algebra and Statistics
- SIT194 Introduction to Mathematical Modeling

- SEP105 Programming and Visualisation
- SEJ103 Materials Engineering Project

## Second year

Compulsory modules conducted by RIC

- SEV201 Environmental Health Engineering
- SEM218 Fluid Mechanics
- SEP291 Engineering Modelling
- SLE245 Marine Geographic Information Systems
- SLE240 Analysing Marine Dynamics
- SEJ202 Field Investigation

Third and fourth year modules will be conducted at Deakin University, Australia (After successfully completing the modules in the first two years\*\*)

## Job opportunities available globally

- Environmental Compliance Engineer
- Environmental Engineer
- Environmental Health Officer
- Green Design Engineer
- Hazardous Water Manager
- Land Surveyor
- Natural Resources Specialist
- Research Assistant
- Reservoir Engineer
- Storm Water Engineer
- Waterway Manager

This list is non-exhaustive

\*\*Subject to the conditions of achieving a satisfactory overall weighted average mark (as decided by the Faculty) for the units completed at RIC, meeting the relevant English Language requirement and student visa requirements. For more information on Deakin admission criteria, please refer to the Deakin international course guide.

## Bachelor of Engineering (Honours)-Mechanical Engineering Major

The Bachelor of Engineering (Honours) - Mechanical Engineering Major offers a thorough grounding in the principles of mechanics, thermodynamics, and materials science. Students study units like Fluid Mechanics, Machine Design, and Structural Design, developing skills for designing and improving mechanical systems. Career prospects include roles as mechanical engineers, design engineers, and manufacturing specialists, preparing graduates for impactful careers in automotive, aerospace, manufacturing, and industrial sectors.

### Entry requirements:

- Applicant must hold at least 7 points\* (from a minimum of 2 and a maximum of 3 A/L subjects with at least S grade in Combined Mathematics) at Advanced Level (National) or 6 points\* (from a minimum of 2 and a maximum of 3 A/L subjects with at least E grade in Mathematics) at Advanced Level (London). Students who do not meet this requirement, refer page 28

\*To calculate A/L (UK) points: A\*/A=5, B=4, C=3, D=2, E=1

\*To calculate A/L (Sri Lanka) points: A=5, B=4, C=3, S=2

### First year

Compulsory modules conducted by RIC

- SEJ103 Materials Engineering Project
- SIT194 Introduction to Mathematical Modelling
- SEP105 Programming and Visualisation
- SET111 Sustainable Design
- SEJ104 Engineering in Society
- SEB101 Engineering Physics
- SIT199 Applied Algebra and Statistics

### Second year

Compulsory modules conducted by RIC

- SEM200 Machine design
- SEM218 Fluid mechanics
- SEP291 Engineering modelling
- SEJ201 Structural design
- SEM216 Stress and failure analysis
- SEM202 Thermodynamics

Third and fourth year modules will be conducted at Deakin University, Australia (After successfully completing the modules in the first two years\*\*)

### Job opportunities available globally

- Automotive Engineer
- Engine Designer
- Instrumentation Engineer
- Maintenance Engineer
- Mechanical Engineer
- Mining Engineer
- Plumbing Engineer
- Railway Engineer
- Research Assistant
- Robotics Engineer

This list is non-exhaustive

\*\*Subject to the conditions of achieving a satisfactory overall weighted average mark (as decided by the Faculty) for the units completed at RIC, meeting the relevant English Language requirement and student visa requirements. For more information on Deakin admission criteria, please refer to the Deakin international course guide.

## Bachelor of Engineering (Honours)-Mechatronics Engineering Major

The Bachelor of Engineering (Honours) - Mechatronics Engineering Major provides an in-depth understanding of integrated mechanical, electronic, and computer systems. Students study units like Sustainable Design, Analogue and Digital Electronics, and Embedded System Design, developing skills to design and maintain automated systems. Career prospects include roles as mechatronics engineers, robotics specialists, and automation engineers, preparing graduates for impactful careers in robotics, manufacturing, and advanced technology sectors.

### Entry requirements:

- Applicant must hold at least 7 points\* (from a minimum of 2 and a maximum of 3 A/L subjects with at least S grade in Combined Mathematics) at Advanced Level (National) or 6 points\* (from a minimum of 2 and a maximum of 3 A/L subjects with at least E grade in Mathematics) at Advanced Level (London). Students who do not meet this requirement, refer page 28

\*To calculate A/L (UK) points: A\*/A=5, B=4, C=3, D=2, E=1

\*To calculate A/L (Sri Lanka) points: A=5, B=4, C=3, S=2

### First year

Compulsory modules conducted by RIC

- SEJ102 Electrical Systems Engineering
- SIT194 Introduction to Mathematical Modelling
- SEP105 Programming and Visualisation
- SET111 Sustainable Design
- SEJ104 Engineering In Society
- SEB101 Engineering Physics

- SIT199 Applied Algebra and Statistics

## Second year

---

Compulsory modules conducted by RIC

- SEM200 Machine Design
- SEM216 Analogue and Digital Electronics
- SEP291 Engineering Modelling
- SEE222 Embedded System Design
- SEE203 Programming and Visualisation
- SEE212 Power Electronics

Third and fourth year modules will be conducted at Deakin University, Australia (After successfully completing the modules in the first two years\*\*)

## Job opportunities available globally

---

- Aerospace Engineer
- Automation Engineer
- Biomedical Engineer
- Control System Design
- Control System Engineer
- Design and Applications Engineer
- Electronic Design Engineer
- Mechatronics Engineer
- Research Assistant
- Robotics Engineer

This list is non-exhaustive

\*\*Subject to the conditions of achieving a satisfactory overall weighted average mark (as decided by the Faculty) for the units completed at RIC, meeting the relevant English Language requirement and student visa requirements. For more information on Deakin admission criteria, please refer to the Deakin international course guide.



*“Studying in the Deakin Pathway Programme at RIC has been an incredible experience for me. One aspect that truly stands out is the co-teaching method adopted by the faculty. I am grateful for the opportunity to be part of a programme that prioritizes innovative teaching methods like co-teaching. It has undoubtedly enhanced my academic experience and equipped me with valuable skills for my future endeavors”*

**Dinevmie Methunima Adikaram**

Deakin Pathway Programme



# Information Technology Pathway Programmes

Deakin University



CRICOS Provider Code: 00113B

The IT Pathway Programmes at RIC offer a comprehensive foundation in diverse information technology fields, enabling students to start their studies at RIC and transfer to Deakin University in Australia to complete their degrees. Students engage in hands-on projects, practical coding exercises, and collaborative learning, acquiring crucial technical skills and industry insights. After completing the initial phase at RIC, students have the opportunity to continue their education at Deakin University, benefiting from world-class facilities, a vibrant academic community, and international career prospects.

## Information Technology pathway programmes

Bachelor of Software Engineering (Honours)

Bachelor of Data Science

Please scan the QR  
code for frequently  
asked questions



## Bachelor of Software Engineering (Honours)

The Bachelor of Software Engineering (Honours) at RIC delves deep into the intricacies of software development, covering areas such as programming languages, algorithms, full stack development, discrete mathematics, and project management. With a focus on practical skills and theoretical foundations, students engage in hands-on projects and internships, preparing them for roles as software engineers, system architects, and project managers in industries ranging from technology and finance to healthcare and entertainment.

### Entry requirements:

- Applicant must hold at least 7 points\* (from a minimum of 2 and a maximum of 3 A/L subjects with at least S grade in Combined Mathematics) at Advanced Level (National) or 6 points\* (from a minimum of 2 and a maximum of 3 A/L subjects with at least E grade in Mathematics) at Advanced Level (London). Students who do not meet this requirement, refer page 28

\*To calculate A/L (UK) points: A\*/A=5, B=4, C=3, D=2, E=1

\*To calculate A/L (Sri Lanka) points: A=5, B=4, C=3, S=2

### First year

Compulsory modules conducted by RIC

- SIT102 Introduction to Programming
- SIT111 Computer Systems
- SEJ104 Engineering in Society
- SIT192 Discrete Mathematics
- SIT123 Data Capture Technologies
- SIT202 Computer Networks and Communication

- SIT232 Object-Oriented Development
- SIT103 Database Fundamentals

### Second year

Compulsory modules conducted by RIC

- SIT313 Full Stack Development: Secure Frontend Applications
- SIT210 Embedded Systems Development
- SIT221 Data Structures and Algorithms
- SET111 Sustainable Design
- SIT217 Introduction to Software Engineering
- SIT331 Full Stack Development: Secure Backend Services
- SIT223 Professional Practice in Information Technology
- SIT315 Concurrent and Distributed Programming

Third and fourth year modules will be conducted at Deakin University, Australia (After successfully completing the modules in the first two years\*\*)

### Job opportunities available globally

- Applications Engineer
- Cyber Security Engineer
- Embedded Systems Developer
- Full Stack Engineer
- Mobile Applications Developer
- Robotics Application Engineer
- Software Developer
- Software Quality Assurance (SQA) Engineer
- Systems Architect

This list is non-exhaustive

\*\*Subject to the conditions of achieving a satisfactory overall weighted average mark (as decided by the Faculty) for the units completed at RIC, meeting the relevant English Language requirement and student visa requirements. For more information on Deakin admission criteria, please refer to the Deakin international course guide.

## Bachelor of Data Science

The Bachelor of Data Science programme offers students a comprehensive grasp of data analysis, machine learning, and data management. With courses covering Data Mining, Statistical Analysis, Computer Networks/Systems, and Big Data Technologies, students gain the skills to extract valuable insights from extensive datasets. Graduates enter varied career paths as data scientists, business analysts, or database administrators, ready to impact sectors like technology, finance, healthcare, and more with their analytical expertise and strategic insights.

### Entry requirements:

- Applicant must hold at least 7 points\* (from a minimum of 2 and a maximum of 3 A/L subjects) at least S grade in Combined Mathematics) at Advanced Level (National) or 6 points\* (from a minimum of 2 and a maximum of 3 A/L subjects with at least E grade in Mathematics) at Advanced Level (London). Students who do not meet this requirement, refer page 28

\*To calculate A/L (UK) points: A\*/A=5, B=4, C=3, D=2, E=1

\*To calculate A/L (Sri Lanka) points: A=5, B=4, C=3, S=2

### First year

Compulsory modules conducted by RIC

- SIT102 Introduction to Programming
- SIT111 Computer Systems
- SIT192 Discrete Mathematics
- SIT112 Data Science Concepts
- SIT191 Introduction to Statistics and Data Analysis
- SIT292 Linear Algebra for Data Analysis



- SIT232 Object-Oriented Development
- SIT103 Database Fundamentals

Second and third year modules will be conducted at Deakin University, Australia (After successfully completing the first year modules\*\*)

### Job opportunities available globally

- Business Strategist
- Data Analyst
- Data Architect
- Data Engineer
- Data Scientist
- Data Visualisation Specialist
- Database Administrator
- Information Analyst
- Reporting Analyst

This list is non-exhaustive

\*\*Subject to the conditions of achieving a satisfactory overall weighted average mark (as decided by the Faculty) for the units completed at RIC, meeting the relevant English Language requirement and student visa requirements. For more information on Deakin admission criteria, please refer to the Deakin international course guide.



*“Studying in the Deakin Pathway programme at RIC has exceeded my expectations in every way. One of the programme’s standout features is the opportunity to study Deakin-accredited curriculum right from the first year. This has provided me with a seamless transition to Australian education standards and prepared me effectively for my future studies at Deakin University”*

**Kaveesh Dayan Rajapakse**  
Deakin Pathway Programme

# Learn from World-Class Deakin Experts

In a groundbreaking move set to reshape the landscape of higher education in Sri Lanka, RIC, together with Deakin University, Australia, introduces a unique teaching technique called co-teaching in the Deakin pathway programmes. This initiative provides students with the invaluable opportunity to experience Australian teaching firsthand. Students learn face-to-face from Australian lecturers from Deakin University. RIC recently conducted co-teaching sessions, and feedback from students has been overwhelmingly positive. Every student enjoyed the sessions and appreciates the teaching techniques of the Deakin lecturers.



Image description: Dr. John Long from Deakin university Australia conducting a lecture for RIC students

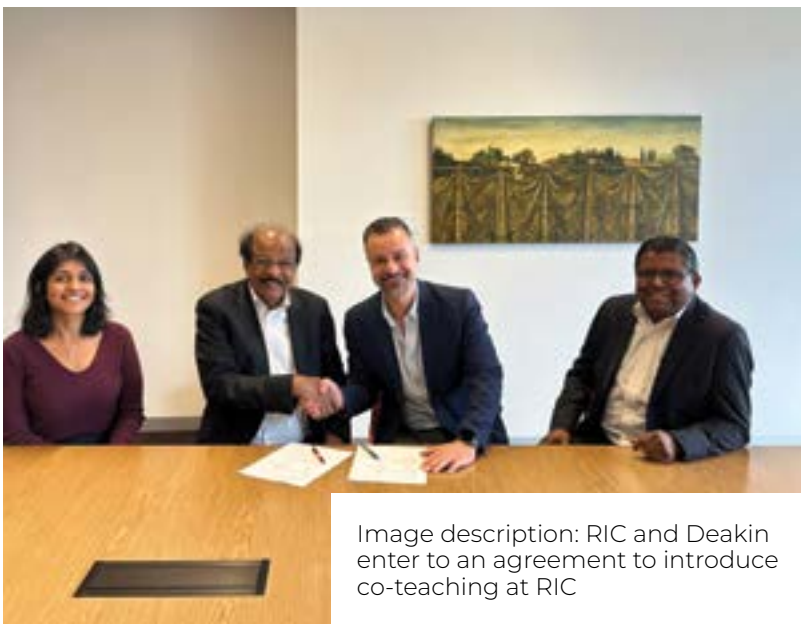


Image description: RIC and Deakin enter to an agreement to introduce co-teaching at RIC

## A Unique Learning Experience

In this unique initiative, students enrolled in these programmes at RIC will have the invaluable opportunity to be co-taught by esteemed Deakin faculty members from Australia. These academic units will mirror the curriculum and resources used at Deakin, ensuring a seamless transition for students aiming to pursue further education in Australia.

## Benefits Galore for Sri Lankan Students

The advantages that students will gain through this co-teaching initiative are unparalleled. This collaboration introduces an 'Academic Mentorship Programme,' enriching the overall student experience with high-quality teaching and learning support from both RIC and Deakin teaching staff. Beyond the academic realm, this collaboration also offers significant cost savings for students. By receiving an authentic Australian education experience within their home country, students can pursue their dreams without the financial burden of studying abroad.



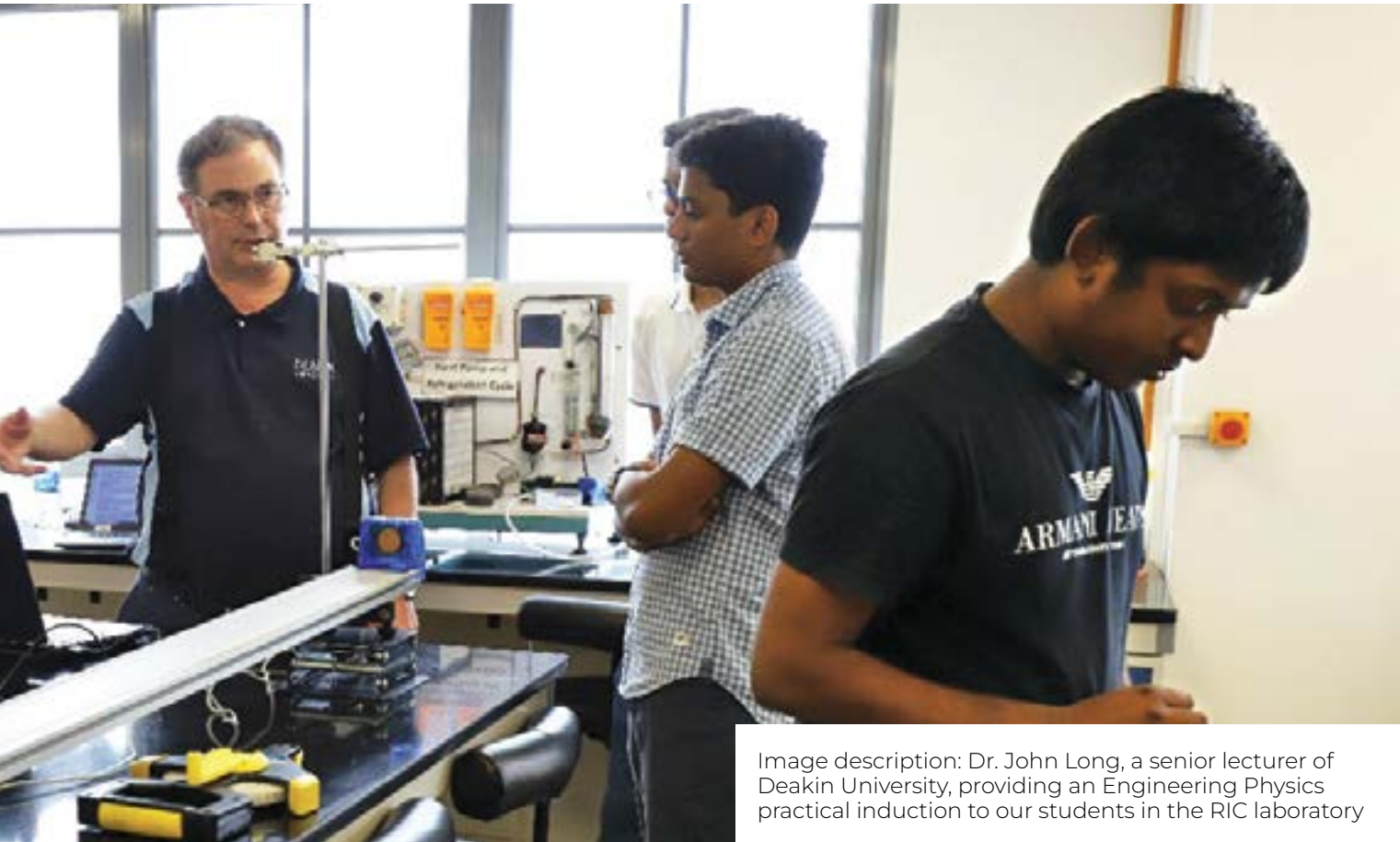


Image description: Dr. John Long, a senior lecturer of Deakin University, providing an Engineering Physics practical induction to our students in the RIC laboratory



Image description: Dr. Mahbube Subhani, a senior lecturer of Deakin University, conducting a seminar on Mechanics to our students



Image description: Our students on a field excursion to Knuckles with Dr. Tricia Wevill (Plant Ecologist) a senior lecturer of Deakin University



The first step in the process of the public's use and enjoyment of the world's natural resources is the identification of those resources. This is a complex task that requires a wide range of data and information. The following table provides a summary of the key factors that influence the availability and use of natural resources.

Factor	Impact
Population Growth	Increases demand for resources
Technological Advancement	Improves resource efficiency
Government Policy	Regulates resource use
Market Forces	Influences resource allocation
Environmental Degradation	Reduces resource availability
Climate Change	Alters resource distribution
Socioeconomic Inequality	Affects resource access
Political Instability	Disrupts resource management
Globalization	Increases resource trade
Urbanization	Increases resource consumption

The second step in the process is the assessment of the resources. This involves a detailed analysis of the quantity, quality, and distribution of the resources. This step is crucial for understanding the potential of the resources and for identifying the areas that require the most attention.

The third step in the process is the development of a management plan. This plan should take into account the needs of the public, the requirements of the industry, and the interests of the environment. The plan should also be flexible enough to adapt to changing circumstances.

The fourth step in the process is the implementation of the management plan. This involves a range of activities, including the establishment of regulatory frameworks, the provision of technical assistance, and the monitoring and evaluation of the plan's progress.

The fifth and final step in the process is the review and evaluation of the plan. This involves a regular assessment of the plan's effectiveness and a willingness to make adjustments as needed.

# Ministry of Higher Education (MoHE) approved and University Grants Commission (UGC) Accredited Programmes



Recognised by the Ministry of Higher Education and the University Grants Commission in Sri Lanka, these programmes provide high-quality education at an affordable cost. Students benefit from a curriculum that combines theoretical knowledge with practical application, ensuring they gain the skills and expertise needed for successful careers. Completing their education at RIC, students have access to excellent facilities, a supportive academic community, and local career opportunities.

## MoHE/ UGC approved programmes

Bachelor of Business (Honours) in International Economics and Finance

Bachelor of Science (Honours) in Biomedical Sciences

Please scan the QR code for frequently asked questions



## Bachelor of Business (Honours) in International Economics and Finance

The Bachelor of Business (Honours) in International Economics and Finance programme offers a comprehensive exploration of global financial systems and economic principles. Through a well-designed curriculum that includes subjects such as International Trade, International Financial Markets, International Commercial Laws, Econometrics, Corporate Finance, and International Macroeconomics, students gain deep insights into the complexities of international finance and economics. Graduates are well-prepared for diverse career paths and are equipped to navigate the intricate landscape of the global economy with confidence and expertise.

### Entry requirements:

- 3 S passes in the Commerce subject stream in one and at the same sitting at the Advanced Level examination conducted by the Department of Examinations of Sri Lanka or acceptable equivalent qualification of either Cambridge or Edexcel;

OR

3 S passes in any subject stream in one and at the same sitting at the Advanced Level examination conducted by the Department of Examinations of Sri Lanka with a bridging course approved by the Specified Authority

AND

C pass for Mathematics in Ordinary Level examination conducted by the Department of Examinations of Sri Lanka or equivalent qualification.

- Pass the internal Admission Test and interview

### First year

#### Semester - 1

- IEFS 11013 Microeconomics
- IEFS 11023 Financial Accounting
- IEFS 11033 Process of Globalization
- IEFS 11043 Mathematics for Economics and Finance
- IEFS 11053 Business Information Systems

#### Semester - 2

- IEFS 12013 Macroeconomics
- IEFS 12023 Corporate Finance
- IEFS 12033 International Banking and Financial Markets
- IEFS 12043 Management Process
- IEFS 12053 Statistics for Economics and Finance

### Second year

#### Semester - 1

- IEFS 21013 Managerial Economics
- IEFS 21023 International Trade and Trade policy
- IEFS 21033 Marketing Management
- IEFS 21043 Skill Development- (International Languages)
- IEFS 21053 Economic Issues and Challenges in Developing Countries

#### Semester - 2

- IEFS 22013 International Macroeconomics
- IEFS 22023 Derivatives and Risk Management
- IEFS 22033 Environmental Economics
- IEFS 22043 Skill Development- (International Languages)
- IEFS 22053 International Finance

### Third year

#### Semester - 1

- IEFS 31013 International Commercial Law
- IEFS 31023 International Political Economy
- IEFS 31033 Econometrics
- IEFS 31043 Project Management
- IEFS 31053 Services Marketing

- IEFS 31063 Tourism Economics
- IEFS 31073 Managerial Finance

#### Semester - 2

- IEFS 32013 Development Economics
- IEFS 32023 Financial Statement Analysis
- IEFS 32033 Global Poverty and Inequality
- IEFS 32043 Behavioural Economics and Finance
- IEFS 32053 Organisational Behaviour
- IEFS 32063 Economic Planning and Policy

### Fourth year

#### Semester - 1

- IEFS 32073 Entrepreneurship Development
- IEFS 41013 Financial Modelling and Forecasting
- IEFS 41023 Research Methods
- IEFS 41036 Internship/ Institutional Training
- IEFS 41043 Investment Analysis and Portfolio Management
- IEFS 41053 Globalization and Economic Development
- IEFS 41063 International Marketing

#### Semester - 2

- IEFS 42013 Big Data Analytics for Economics
- IEFS 42023 Contemporary Issues in Economics and Finance
- IEFS 42039 Independent Research

## Job opportunities available globally

---

- Economics, Banking and Financial Services Sector :
    - Business Analyst
    - Investment Banking Analyst
    - Financial Risk Analyst
    - Corporate Finance Associate
    - Commercial Banking Officer
    - Wealth Management Adviser
    - Risk Manager
    - Financial Planner
    - Economist
    - Natural Resource Economist
    - Environmental Economist
    - Researcher
    - Sustainability Analyst
  - International Trade and Commerce Sector :
    - International Trade Specialist
    - Import/Export Manager
    - Trade Compliance Analyst
    - International aid and development project officer
    - International Relations Specialist
  - Government and Public Policy Sector :
    - Economic Policy Analyst
    - Trade Policy Specialist
    - International Development Consultant
    - Foreign Affairs Officer
    - Economic Adviser to Government Agencies
    - International Trade Specialist
  - Multinational Corporations :
    - International Financial Manager
    - Global Market Analyst
    - Foreign Exchange Trader
  - Nonprofit and International Organisations :
    - Development Economist
    - Programme Officer for Economic Development Projects
    - Policy Analyst for International NGOs
    - Research Analyst for Think
- Tanks
  - International Relations Specialist
  - Consulting and Advisory Services :
    - Economic Consultant
    - International Business Consultant
    - Financial Strategy Adviser
    - Market Research Analyst & Consultant
  - Academia and Research Institutions :
    - Lecturer in Economics or Finance
    - Teacher
    - Research Economist
    - Economic Research Analyst
    - Policy Researcher
    - Financial Economist
  - Technology and Fintech Sector :
    - Financial Technology (FinTech) Analyst
    - Data Analyst/Scientist in Finance

This list is non-exhaustive

## Bachelor of Science (Honours) in Biomedical Sciences

The Bachelor of Science (Honours) in Biomedical Sciences at RIC provides a comprehensive exploration of human biology, disease mechanisms, and cutting-edge medical research. With a curriculum spanning Genetics, Immunology, Pharmacology, Healthcare Marketing, Lab Training, and Molecular Biology, students acquire a deep understanding of foundational biomedical concepts. This programme prepares graduates for versatile career avenues such as biomedical research, pharmaceuticals, clinical laboratory science, and healthcare management, empowering them to drive forward transformative advancements in healthcare.

### Entry requirements:

- 3 S passes for Biology, Chemistry and Physics or Agricultural Science subjects, in one and at the same sitting at the Advanced Level examination conducted by the Department of Examinations of Sri Lanka or acceptable equivalents of either Cambridge or Edexcel
- Pass the internal Admission Test and interview

### First year

#### Semester - 1

- EC 00011 Foundation course in IT
- EC 00022 Mathematics for Biology
- BMSC 11011 Laboratory & Field Work Safety Induction
- BMSC 11014 General Chemistry
- BMSC 11022 Organic chemistry
- BMSC 11032 Cell Biology
- BMSC 11043 Human Anatomy I
- BMSC 11053 Human Physiology I

#### Semester - 2

- BMS 12063 Physics for Biomedical Science

- BMS 12073 Human Physiology II
- BMS 12082 Biochemistry I
- BMS 12093 General Microbiology
- BMS 12102 Human Genetics & Introduction to Molecular Biology
- BMS 12112 Histology

### Second year

#### Semester - 1

- BMS 21013 Biochemistry II
- BMS 21023 General Pathology
- BMS 21033 Medical Parasitology and Entomology
- BMS 21042 Molecular Basis of diseases
- BMS 21052 Biostatistics
- BMS 21063 Biomedical Instrumentation

#### Semester - 2

- BMS 22073 Clinical Biochemistry I
- BMS 22083 Haematology I
- BMS 22092 Medical Bacteriology
- BMS 22103 Medical Virology and Mycology
- BMS 22113 Clinical Immunology

### Third year

#### Semester - 1

- BMS 31013 Haematology II
- BMS 31023 Clinical Biochemistry II
- BMS 31042 Diagnostic Histopathology and Cytopathology
- BMS 31053 Biotechnology and Applications
- BMS 31063 Laboratory Management

#### Semester - 2

- BMS 32073 Clinical Nutrition
- BMS 32083 Diagnostic Microbiology
- BMS 32093 Laboratory Quality Assurance and Accreditation
- BMS 32103 Research Methodology and Bioethics
- BMS 32122 Remote Sensing GIS and GPS
- BMS 41024 Pharmacology and Toxicology

### Fourth year

#### Semester - 1

- BMS 41013 Principles of Epidemiology
- BMS 41023 Medical Bioinformatics
- BMS 41033 Stem Cell Biology and Therapy
- BMS 41042 Scientific Writing & Presentation of the Research Proposal
- BMS 41054 Laboratory Training

#### Semester - 2

- BMS 42062 Case Study and Seminar (Self Learning Module)
- BMS 42076 Research Project

Options (have to select modules to cover 6 credits)

- BMS 42082 Microbial Pharmaceutical Products
- BMS 42092 Nanobiotechnology
- BMS 42102 Biomaterials
- BMS 42112 Healthcare Marketing

### Job opportunities available globally

- Healthcare, public health and administration sector :
  - Medical Laboratory Technologist
  - Phlebotomist
  - Clinical Laboratory Scientist
  - Blood Bank Technologist
  - Histotechnologist
  - Healthcare Assistant/consultant/administrator
- Research and Development :
  - Biomedical Scientist
  - Research Scientist
  - Project coordinators
  - Product Development Scientist
  - Clinical Trials Coordinator
- Entrepreneurship and Industry :
  - Biotech Entrepreneur
  - Medical Device Developer
  - Research and Development officer
  - Microbiologist /Chemist
  - Quality Control Analyst



- Academia and Education :
  - Laboratory Instructor/  
demonstrator / Lecturer
  - Research Assistant in  
Academia
  - Technical Officers/Lab  
technicians in universities
  
- International Opportunities :
  - Clinical Scientist
  - Biomedical Consultant
  - Research Scientist
  - Laboratory Technician

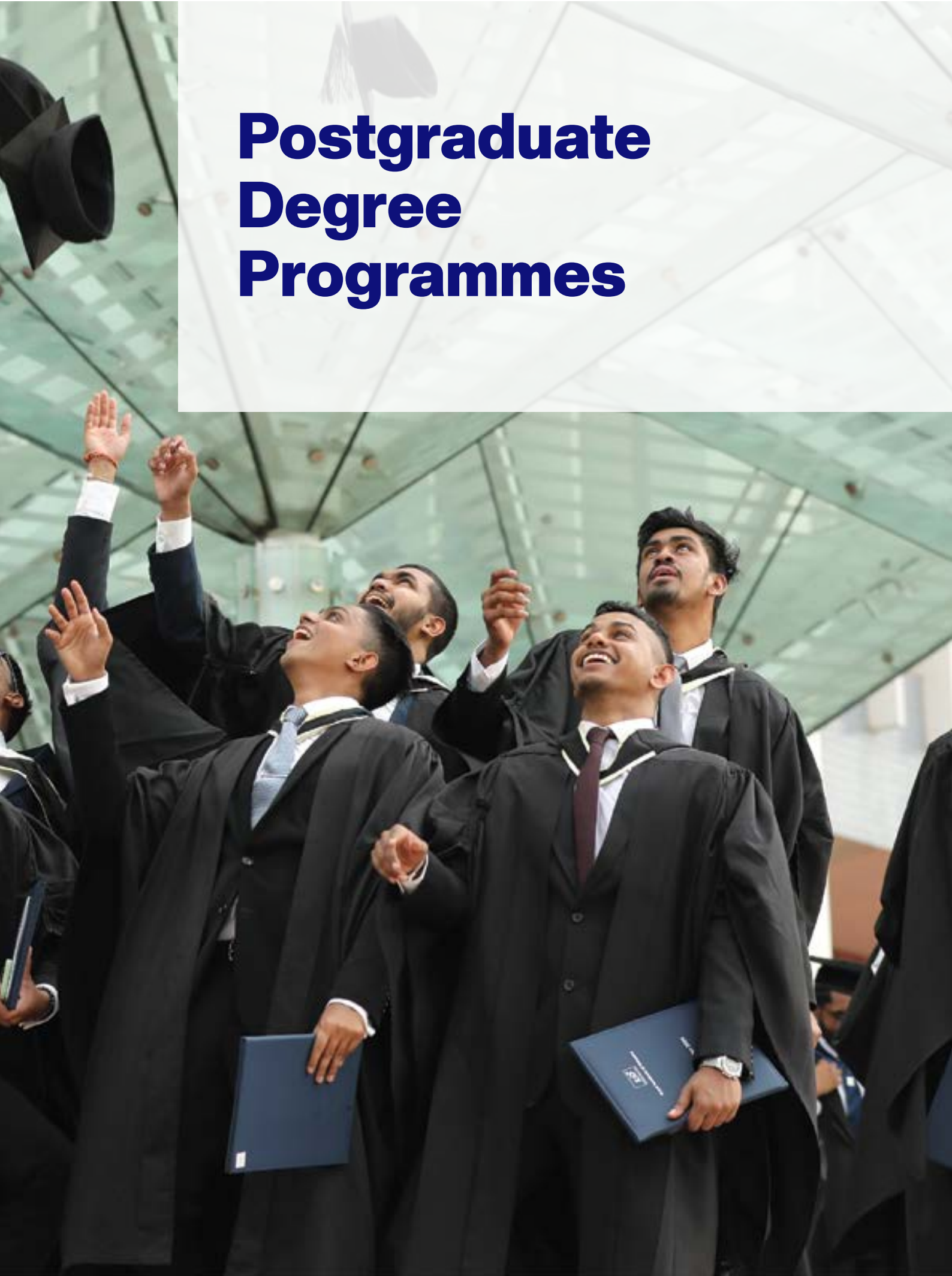
This list is non-exhaustive







# Postgraduate Degree Programmes



## Graduate Diploma in Commercial Law

Our Graduate Diploma in Commercial Law is designed for individuals seeking to deepen their understanding of the legal principles governing commercial activities. This programme is ideal for professionals aiming to enhance their legal expertise in the business sector, as well as for graduates aspiring to specialise in commercial law.

### Entry requirements:

- An acceptable Bachelor's or Associate degree  
OR
- An acceptable Master's degree (or any other appropriately accredited Level 7 award) provided this is at least 1 year full time in duration  
OR
- An acceptable Level 5 or Level 6 award (such as an HND or Graduate Certificate) provided this is at least 1 year full time in duration.

### Two compulsory modules

- LA2015 Commercial law\*
- LA1040 Contract law\*

### Two optional modules

Choose two of the following modules:

- LA3021 Company law
- LA3014 Conflict of laws
- LA3026 Intellectual property

### Further studies and career opportunities

Upon graduation, you will be able to use the Graduate Diploma in Commercial Law as a bridging qualification for entry into postgraduate study, for example, on the LL.M.

This programme is ideal for those who are looking to upgrade their knowledge on the commercial and corporate law in their career.

## Graduate Diploma in Business Analytics

Our Graduate Diploma in Business Analytics is designed for professionals and graduates who seek to enhance their analytical skills and leverage data to drive business decision-making. This programme equips students with the knowledge and practical tools needed to interpret complex data, identify trends, and provide actionable insights in today's data-driven business environment.

### Entry requirements:

Admission criteria for foreign students

- An acceptable quantitative\* Bachelor's degree  
OR
- An acceptable Bachelor's degree with at least two courses passed in sufficient mathematical subjects\*\*  
OR
- An acceptable quantitative\* Master's degree provided this is at least one-year full time in duration.
- Strong background in Mathematics or Statistics equivalent to A/L's.

### Two compulsory modules

- ST2187 Business analytics, applied modeling and prediction
- ST3188 Statistical methods for market research

### Two optional modules

- One full course from Selection group M
- One full course (or two half courses) from Selection groups M or N  
OR
- EC2020 Elements of econometrics

### Selection group M

- AC3059 Financial management
- FN2190 Asset pricing and financial markets
- AC2097 Management accounting
- DV3165 Development management
- FN2191 Principles of corporate finance
- IS2184 Information systems management
- IS3167 Management and innovation of e-business
- IS3183 Management and social media
- MN2177 Core management concepts
- MN2032 Management science methods
- MN3141 Marketing management
- MN3194 Entrepreneurship
- SP2079 Elements of social and applied psychology
- ST3188 Statistical methods for market research

### Selection group N

- MT2116 Abstract mathematics
- MT2175 Further linear algebra (half course)
- MT2176 Further calculus
- ST2133 Advanced statistics: distribution theory (half course)
- ST2134 Advanced statistics: statistical inference (half course)
- ST2187 Business analytics, applied modelling and prediction
- ST2195 Programming for data science
- ST3188 Statistical methods for market research
- ST3189 Machine learning

\*Acceptable quantitative degree/award titles include: Computer Science, Economics, Engineering, Finance, Mathematics, Medicine, Physics, Psychology, Quantitative Management, Quantitative Finance, Social Sciences with Quantitative Methods or Statistics

\*\*Sufficient mathematical subjects include: Algebra, Algorithms, Business Mathematics, Business Statistics, Calculus, Computer Mathematics, Differentials, Engineering Mathematics, Geometry, Mathematics, Quantitative Methods, Quantitative Techniques, Statistics or Trigonometry

### Job opportunities available globally

- Data Scientist/Data Engineer/Data Analyst
- Artificial Intelligence Application Developer
- Algorithm Specialist
- Big data Engineer/Architect
- Business Intelligence Analyst
- Business Intelligence Developer
- Machine learning Scientist/Machine learning Engineer
- Research Scientist

This list is non-exhaustive

## Graduate Diploma in Data Science

The Graduate Diploma in Data Science at Royal Institute of Colombo is designed for individuals seeking to advance their knowledge and skills in data science. This programme provides a strong foundation in information systems management, abstract mathematics, and machine learning, preparing students to tackle complex data-driven challenges in various industries.

### Entry requirements:

- An acceptable quantitative\* Bachelor's degree or
  - An acceptable Bachelor's degree with at least two courses passed in sufficient mathematical subjects\*\*
- OR
- An acceptable quantitative\* Master's degree provided this is at least one-year full time in duration.
  - Strong background in Mathematics or Statistics equivalent to A/L's

### Three compulsory modules

- IS2184 Information systems management
- ST3189 Machine Learning
- ST2195 Programming for data science

### One optional module

One course from:

- EC2020 Elements of econometrics
- MT2116 Abstract mathematics
- ST2187 Business analytics, applied modelling and prediction
- ST2133 Advanced statistics: distribution theory (half course) AND
- ST 2134 Advanced statistics: statistical inference (half course)
- IS3167 Management and innovation of e-business

\*Acceptable quantitative degree/ award titles include: Computer Science, Economics, Engineering, Finance, Mathematics, Medicine, Physics, Psychology, Quantitative Management, Quantitative Finance, Social Sciences with Quantitative Methods or Statistics

\*\*Sufficient mathematical subjects include: Algebra, Algorithms, Business Mathematics, Business Statistics, Calculus, Computer Mathematics, Differentials, Engineering Mathematics, Geometry, Mathematics, Quantitative Methods, Quantitative Techniques, Statistics or Trigonometry

### Job opportunities available globally

- Data Scientist
- Data Analyst
- Machine Learning Engineer
- Business Analyst (Data-driven focus)
- Business Intelligence Analyst
- Data Engineer
- Data Consultant
- Predictive Analyst
- Quantitative Analyst
- Marketing Analyst (Data-driven focus)
- Financial Analyst (Data-driven focus)
- Operations Analyst (Data-driven focus)
- Research Analyst (Data-driven focus)
- Statistician
- Database Administrator
- Analyst (Healthcare, Social Media, Customer Insights, Sports, Retail, etc.)

This list is non-exhaustive

## Master of Laws (LLM)

The Master of Laws from the University of London, with academic guidance from Queen Mary University of London and UCL, offers the ideal path forward for your legal career. This programme caters to those seeking expertise and upskilling in corporate law and commercial law.

### Entry requirements:

- A Bachelor of Laws (LLB) with Second Class Honours from the University of London  
OR
- A Second Class Bachelor's degree (or equivalent), where at least half the units are in law related subjects.
- A pass in the Bar Vocational Course (BVC) of England and Wales, or the Qualifying Exam of the Solicitors' Regulation Authority of England (or corresponding exams in Scotland or Northern Ireland), plus a Second Class Bachelor's degree (or equivalent).
- The Common Professional Examination or a Graduate Diploma in Law, plus a Second-Class Bachelor's degree (or equivalent).
- Qualified as a solicitor or barrister in England or Wales, or the equivalent elsewhere.

### Specialisation: Commercial and Corporate Law

#### Stage 01

Postgraduate Certificate in Laws (PGCert)

#### Course 1 – Foundational and Constitutional issues in Company law

- Module A - Company law foundational issues I
- Module B - Company law foundational issues II
- Module C - Company law constitutional issues - I
- Module D - Company law constitutional issues - II

#### Course 2 Corporate Finance and Management Issues in Company Law

- Module A - Capital I

#### Stage 02

Postgraduate Diploma in Laws (PGDip)

#### Course 2 - Corporate Finance and Management Issues in Company Law

- Module B - Capital II
- Module C - Corporate management I
- Module D - Corporate management II

#### Course 3 Module A - Regulation and Infrastructure of International Commercial Arbitration

- Module A - Regulation and infrastructure of arbitration
- Module B - Arbitration agreement

#### Stage 03

Master of Laws (LLM)

#### Course 3 Module A - Regulation and Infrastructure of International Commercial Arbitration

- Module C – Arbitration tribunal
- Module D – Investment arbitration and specialist arbitration

#### Course 4 Corporate Governance and Compliance

- Module A Governance – legal and regulatory framework
- Module B Compliance
- Module C Bribery and corruption, money laundering and terror financing
- Module D Regulated industries – compliance and risk management in the financial sector

Students accepted to the Postgraduate Laws programmes start at three points of entry, namely at PGCert, PGDip or LLM. Your point of entry is determined by your entry qualifications but does not set your exit award.

It is your choice to leave the programme with a PGCert, PGDip or an LLM - or all three!

You can collect all three qualifications as you wish, provided you complete within a maximum of five years.

- All students are eligible for a PGCert award upon completion of five modules.
- Upon completion of a total of ten modules (PGCert + PGDip), you are eligible for a PGDip award.
- Upon completion of a total of sixteen modules (PGCert + PGDip + LLM), you are eligible for the LLM award.

### Job opportunities available globally

- An LLM will equip you with advanced, specialist legal training and the ability to work in a multinational legal environment
- To hold top positions in a variety of sectors, including banking, financial services, financial regulation, human rights agencies, NGOs and public service the LLM will definitely be an added advantage



Please scan the QR code for frequently asked questions





# Our Industry Partners

At RIC, we place a strong emphasis on our industry connections, recognising that real-world experience is essential to our curriculum. Our partnerships with the companies listed below reflect our commitment to preparing career-ready graduates. These collaborations provide invaluable opportunities, including internships, hands-on projects, guest lectures, and networking events for our students. These connections enable students to gain practical experience, industry insights, and a competitive advantage in the job market.

- Acuity Knowledge Partners
- Acuity Partners
- Dimo
- Verite Research
- LirneAsia
- Advice Labs
- Orell IT
- Adamjee Lukmanjee and Sons
- Uza base
- Wilshire operations and Infintel
- Planlogic
- Lynear Wealth Management
- Daraz

## What the industry has to say



*“Verité Research has consistently been recruiting students from the Royal Institute of Colombo, for many years. Every year, we have seen most graduate students integrate seamlessly into our multi-disciplinary teams. The courses Royal Institute of Colombo offers and the teaching and mentoring they’ve been given have cultivated skills such as critical thinking and problem solving. This has fueled fresh perspectives and innovative ideas to be brought to the table. We are proud to have them as part of the Verité Research family”*



*“RIC, renowned for its affiliations with world-leading universities, cultivates graduates with exceptional communication, research skills and solid fundamentals. These qualities resonate with Acuity Knowledge Partners, a premier KPO firm, boasting close to 6,000 professionals dedicated to supporting over 600 global financial institutions. Congratulations to the graduating students! Your future in shaping the finance sector looks promising with skills nurtured by RIC and opportunities facilitated by Acuity Knowledge Partners”*



*“RIC has produced many talented Legal graduates who have been excellent for our business. They have been able to bring change and transformation to our process and deliver excellent results for our customers and therefore the business”*



*“We have been working closely with RIC since 2019, and we are extremely happy with the quality of students and alumni who have joined our team as interns and full time Staxers. The students are well prepared to face interviews and taught to leverage their best attributes and skills when presenting themselves. The coordinators from RIC have always rendered their utmost support and have a knack and understanding of our business opportunities as well. We look forward to continuing our partnership with RIC for many years to come”*

# Popular Graduate Destinations

## Apparel & textiles:

---

- Brandix
- Hela Clothing
- MAS

## Banking:

---

- Central Bank of Sri Lanka
- Commercial Bank of Ceylon
- DFCC
- Hatton National Bank
- HSBC
- Standard Chartered Bank
- NTB

## Consultancy:

---

- Accenture
- Acuity Knowledge Partners
- Advicelab
- Attune
- Deloitte
- McKinsey & Company
- Stax Inc.

## Finance:

---

- Central Bank of Sri Lanka
- Commercial Bank of Ceylon
- DFCC
- Hatton National Bank
- HSBC
- LSEG
- PwC
- Standard Chartered Bank
- UZABASE
- Wilshire Operations

## Inter - governmental Organisations:

---

- United Nations Sri Lanka
- World Bank
- World Health Organisation
- Human Rights Commission

## Conglomerates:

---

- John Keells Holdings
- Hayleys
- Hemas

## Consumer goods:

---

- 3M
- Abans
- Coca Cola Company
- GlaxoSmithKline
- Johnson & Johnson
- Nestle
- Procter & Gamble
- Softlogic Holdings
- Unilever

## E-commerce:

---

- Daraz
- Wow.lk

## Telecommunication:

---

- Dialog Axiata
- Sri Lanka Telecom

## Legal services:

---

- D. L. & F. De Saram
- F. J. & G. De Saram
- Julius & Creasy
- Marian Chambers
- Muve Colombo
- Nithya Partners
- Paul Ratnayake Associates
- Simon & Associates
- Ironwood Legal Solutions

## Research:

---

- Advocata Institute
- Frontier Research
- LIRNEasia
- Verité Research



# Talk to Our Current Students

Wondering about student life or eager to connect with peers before you join? Scan the QR code to meet Uni Buddy – your go-to for all things at RIC. Receive helpful advice and support from current students before you arrive. Start your RIC adventure with confidence!



# Intake Application / Inquiry Form

1. Student's name - .....

.....

2. Date of Birth ..... / ..... / ..... (DD/MM/YYYY)

3. Student's email address - .....

4. Student's contact number - .....

5. Name of your school - .....

6. Highest educational qualification

- Ordinary Level
- Advanced Level (Cambridge / Edexcel)
- Advanced Level (National)
- Certificate level / Diploma / HND
- Foundation course
- Bachelor's degree

Other - .....

7. I am looking for

- A foundation course
- A certificate course
- An undergraduate degree
- A postgraduate degree

8. Interested degree programme - .....

9. Year of examination

Ordinary Level .....

Advanced Level .....

You may also submit your  
inquiry or application online.  
Scan now!





Royal Institute of Colombo



Royal Institute of Colombo



Royal Institute of Colombo



royalinstituteofcolombo



@royal\_institute\_colombo



**Get to know  
us better  
in your  
own time**

Location Address :

92, Sunethra Devi Road,  
Kohuwala, Nugegoda,  
Sri Lanka

At Royal Institute of Colombo, our students' safety and well-being are our utmost priorities. We promise to take care of our students as we would our own children. We promote inclusivity and ensure no student is treated unfairly or discriminated against.

Our dedicated staff is committed to creating a supportive and nurturing environment where every student can thrive. We believe in fostering a community of respect, empathy, and understanding. Through comprehensive safety measures, counseling services, and wellness programs, we strive to address the physical, emotional, and social needs of our students.

We are dedicated to upholding the highest standards of education and personal development, ensuring that each student feels valued and empowered to reach their full potential. At Royal Institute of Colombo, we are not just an educational institution; we are a family that cares deeply about the holistic growth and happiness of every member.

**(+94) 77 235 5000**

**info@ric.lk**

**www.ric.lk**